



RMI2 mouse mAb

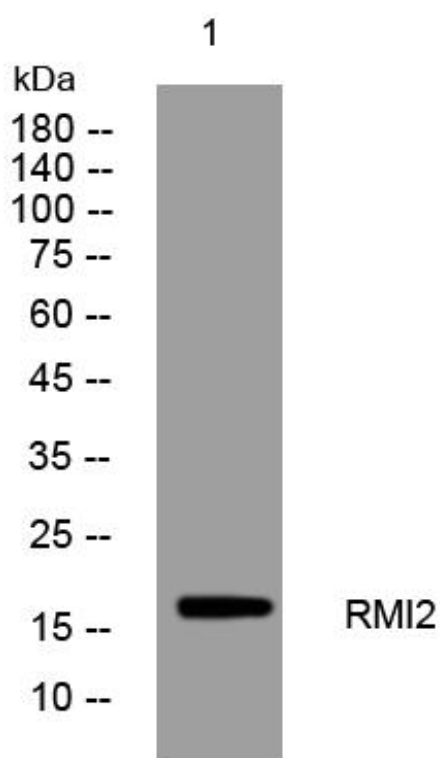
Catalog No	BYmab-08427
Isotype	IgG
Reactivity	Human; Mouse
Applications	WB
Gene Name	RMI2 C16orf75
Protein Name	RMI2
Immunogen	Synthesized peptide derived from human RMI2 AA range: 73-123
Specificity	This antibody detects endogenous levels of RMI2 at Human/Mouse
Formulation	Liquid in PBS containing 50% glycerol, 0.5% BSA and 0.02% sodium azide.
Source	Monoclonal, Mouse,IgG
Purification	The antibody was affinity-purified from mouse antiserum by affinity-chromatography using epitope-specific immunogen.
Dilution	WB 1:500-2000
Concentration	1 mg/ml
Purity	≥90%
Storage Stability	-20°C/1 year
Synonyms	
Observed Band	
Cell Pathway	Nucleus . Colocalizes with BLM at nuclear DNA repair foci.
Tissue Specificity	
Function	function:Essential component of the RMI complex, a complex that plays an important role in the processing of homologous recombination intermediates to limit DNA crossover formation in cells. The complex is therefore essential for the stability, localization, and function of complexes containing BLM. In the RMI complex, it is required to target BLM to chromatin and stress-induced nuclear foci and mitotic phosphorylation of BLM.,PTM:Phosphorylated during mitosis.,similarity:Belongs to the RMI2 family.,similarity:Contains 1 OB DNA-binding domain.,subcellular location:Colocalizes with BLM at nuclear DNA repair foci.,subunit:Component of the RMI complex, containing at least TOP3A, RMI1 and RMI2. The RMI complex interacts with BLM.,

Nanjing BYabscience technology Co.,Ltd



Background	RMI2 is a component of the BLM (RECQL3; MIM 604610) complex, which plays a role in homologous recombination-dependent DNA repair and is essential for genome stability (Xu et al., 2008 [PubMed 18923082]).[supplied by OMIM, Nov 2008],
matters needing attention	Avoid repeated freezing and thawing!
Usage suggestions	This product can be used in immunological reaction related experiments. For more information, please consult technical personnel.

Products Images



Western Blot analysis of various cells using RMI2 mouse mAb