



RTF1 mouse mAb

Catalog No	BYmab-08418
Isotype	IgG
Reactivity	Human; Mouse
Applications	WB
Gene Name	RTF1 KIAA0252
Protein Name	RTF1
Immunogen	Synthesized peptide derived from human RTF1 AA range: 228-278
Specificity	This antibody detects endogenous levels of RTF1 at Human/Mouse
Formulation	Liquid in PBS containing 50% glycerol, 0.5% BSA and 0.02% sodium azide.
Source	Monoclonal, Mouse,IgG
Purification	The antibody was affinity-purified from mouse antiserum by affinity-chromatography using epitope-specific immunogen.
Dilution	WB 1:500-2000
Concentration	1 mg/ml
Purity	≥90%
Storage Stability	-20°C/1 year
Synonyms	
Observed Band	
Cell Pathway	Nucleus, nucleoplasm .
Tissue Specificity	
Function	function:Plays a role in transcription-coupled histone modification. Plays a role in regulation of transcription. Required for maximal induction of heat-shock genes.,similarity:Contains 1 Plus3 domain.,subunit:Interacts with the RNA polymerase II complex. May interact with the PAF1 complex.,
Background	This locus may represent a gene involved in regulation of transcription elongation and chromatin remodeling, based on studies of similar proteins in other organisms. The encoded protein may bind single-stranded DNA. [provided by RefSeq, Sep 2010],
matters needing attention	Avoid repeated freezing and thawing!

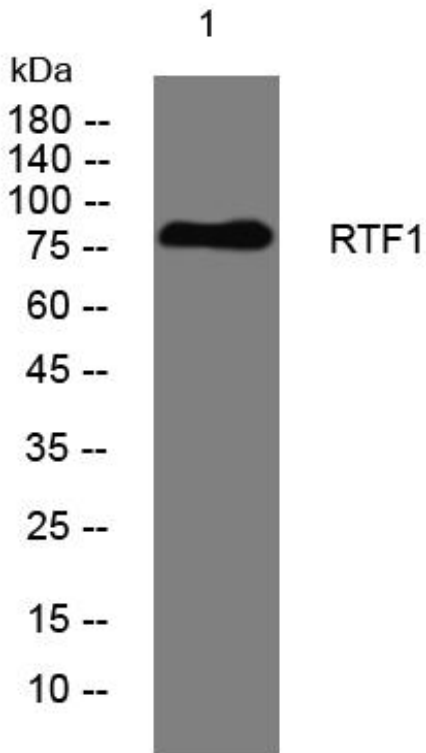
Nanjing BYabscience technology Co.,Ltd



Usage suggestions

This product can be used in immunological reaction related experiments. For more information, please consult technical personnel.

Products Images



Western Blot analysis of various cells using RTF1 mouse mAb

Nanjing BYabs science technology Co.,Ltd

网址: www.njbybio.com

官方热线: 025-5229-8998

监督电话: 15950492658