



UBC12 mouse mAb

Catalog No	BYmab-08417
Isotype	IgG
Reactivity	Human; Mouse
Applications	WB
Gene Name	UBE2M UBC12
Protein Name	UBC12
Immunogen	Synthesized peptide derived from human UBC12 AA range: 37-87
Specificity	This antibody detects endogenous levels of UBC12 at Human/Mouse
Formulation	Liquid in PBS containing 50% glycerol, 0.5% BSA and 0.02% sodium azide.
Source	Monoclonal, Mouse,IgG
Purification	The antibody was affinity-purified from mouse antiserum by affinity-chromatography using epitope-specific immunogen.
Dilution	WB 1:500-2000
Concentration	1 mg/ml
Purity	≥90%
Storage Stability	-20°C/1 year
Synonyms	
Observed Band	
Cell Pathway	cytoplasm,cytosol,extracellular exosome,
Tissue Specificity	
Function	catalytic activity:ATP + NEDD8 + protein lysine = AMP + diphosphate + protein N-NEDD8yllysine.,domain:Both the N-terminal docking peptide and the catalytic core domain must bind the uba3-nae1 complex simultaneously for optimal transfer of nedd8.,function:Accepts the ubiquitin-like protein NEDD8 from the UBA3-NAE1 E1 complex and catalyzes its covalent attachment to other proteins. The specific interaction with the E3 ubiquitin ligase rbx1, but not rbx2, suggests that the rbx1-ube2m complex neddyates specific target proteins, such as cul1, cul2, cul3 and cul4. Involved in cell proliferation.,pathway:Protein modification; protein neddylation.,similarity:Belongs to the ubiquitin-conjugating enzyme family. UBC12 subfamily.,subunit:Interacts with UBA3 and RBX1.,

Nanjing BYabscience technology Co.,Ltd



Background

The modification of proteins with ubiquitin is an important cellular mechanism for targeting abnormal or short-lived proteins for degradation. Ubiquitination involves at least three classes of enzymes: ubiquitin-activating enzymes, or E1s, ubiquitin-conjugating enzymes, or E2s, and ubiquitin-protein ligases, or E3s. This gene encodes a member of the E2 ubiquitin-conjugating enzyme family. The encoded protein is linked with a ubiquitin-like protein, NEDD8, which can be conjugated to cellular proteins, such as Cdc53/culin. [provided by RefSeq, Jul 2008],

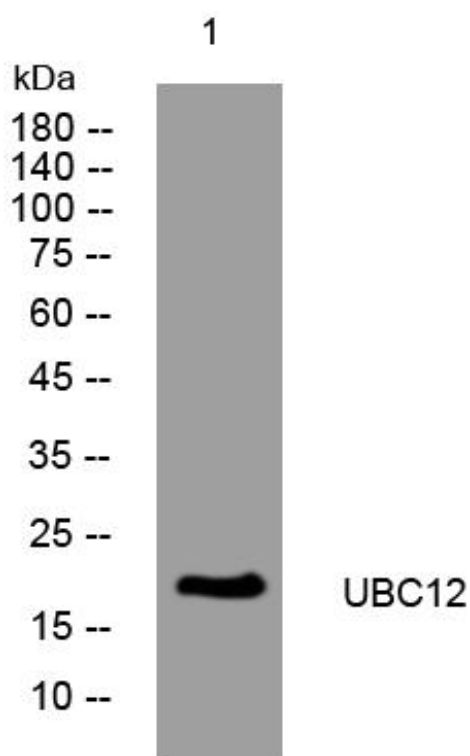
matters needing attention

Avoid repeated freezing and thawing!

Usage suggestions

This product can be used in immunological reaction related experiments. For more information, please consult technical personnel.

Products Images



Western Blot analysis of various cells using UBC12 mouse mAb