



DOCK4 mouse mAb

Catalog No	BYmab-08408
Isotype	IgG
Reactivity	Human; Mouse
Applications	WB
Gene Name	DOCK4 KIAA0716
Protein Name	DOCK4
Immunogen	Synthesized peptide derived from human DOCK4 AA range: 533-583
Specificity	This antibody detects endogenous levels of DOCK4 at Human/Mouse
Formulation	Liquid in PBS containing 50% glycerol, 0.5% BSA and 0.02% sodium azide.
Source	Monoclonal, Mouse,IgG
Purification	The antibody was affinity-purified from mouse antiserum by affinity-chromatography using epitope-specific immunogen.
Dilution	WB 1:500-2000
Concentration	1 mg/ml
Purity	≥90%
Storage Stability	-20°C/1 year
Synonyms	
Observed Band	216KD
Cell Pathway	Cell membrane . Cell projection . Cytoplasm, cytosol . Colocalizes with EPHA2, RHOG and CTTN/cortactin at the tip of protrusions in migrating cells. .
Tissue Specificity	Widely expressed at low level. Highly expressed in skeletal muscle, prostate and ovary. ; [Isoform 2]: May be specifically expressed in the brain and eye.
Function	disease:Defects in DOCK4 are involved in the cause of some cancers, which are probably due to lack of Rap1 activation.,domain:The DHR-2 domain probably mediates the GEF activity.,function:Involved in regulation of adherens junction between cells. Functions as a guanine nucleotide exchange factor (GEF), which activates Rap1 small GTPase by exchanging bound GDP for free GTP.,miscellaneous:Injection of wild-type protein suppresses tumor invasion in osteosarcoma mouse cell lines while it is not the case with the Leu-1718 variant.,similarity:Belongs to the DOCK family.,similarity:Contains 1 DHR-1 (CZH-1) domain.,similarity:Contains 1 DHR-2 (CZH-2) domain.,similarity:Contains 1 SH3 domain.,subunit:Interacts with the SH3 domain of CRK. Interacts with nucleotide-free Rap1.,tissue specificity:Widely expressed at low level. Highly

Nanjing BYabscience technology Co.,Ltd



expressed in skeletal muscle, prostate and ovary.,

Background

This gene is a member of the dedicator of cytokinesis (DOCK) family and encodes a protein with a DHR-1 (CZH-1) domain, a DHR-2 (CZH-2) domain and an SH3 domain. This membrane-associated, cytoplasmic protein functions as a guanine nucleotide exchange factor and is involved in regulation of adherens junctions between cells. Mutations in this gene have been associated with ovarian, prostate, glioma, and colorectal cancers. Alternatively spliced variants which encode different protein isoforms have been described, but only one has been fully characterized. [provided by RefSeq, Jul 2008],

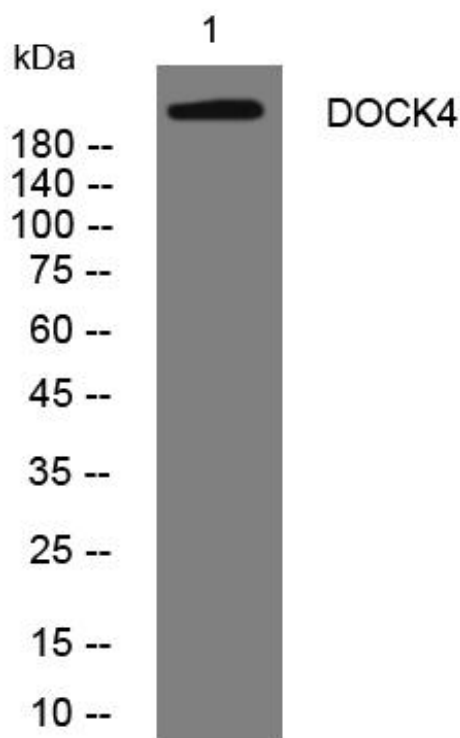
matters needing attention

Avoid repeated freezing and thawing!

Usage suggestions

This product can be used in immunological reaction related experiments. For more information, please consult technical personnel.

Products Images



Western Blot analysis of various cells using DOCK4 mouse mAb