



# CITE1 mouse mAb

Catalog No	BYmab-08402
Isotype	IgG
Reactivity	Human; Mouse
Applications	WB
Gene Name	CITED1 MSG1
Protein Name	CITE1
Immunogen	Synthesized peptide derived from human CITE1 AA range: 116-166
Specificity	This antibody detects endogenous levels of CITE1 at Human/Mouse
Formulation	Liquid in PBS containing 50% glycerol, 0.5% BSA and 0.02% sodium azide.
Source	Monoclonal, Mouse,IgG
Purification	The antibody was affinity-purified from mouse antiserum by affinity-chromatography using epitope-specific immunogen.
Dilution	WB 1:500-2000
Concentration	1 mg/ml
Purity	≥90%
Storage Stability	-20°C/1 year
Synonyms	
Observed Band	
Cell Pathway	Nucleus . Cytoplasm . Shuttles between the nucleus and the cytoplasm by a nuclear export signal and (NES) in a CRM1-dependent manner.
Tissue Specificity	Expressed only in melanocytes and testis.
Function	function:Not known, seems to be associated with pigmentation.,similarity:Belongs to the CITED family.,subunit:Binds to RBM14.,tissue specificity:Expressed only in melanocytes and testis.,
Background	This gene encodes a member of the CREB-binding protein/p300-interacting transactivator with Asp/Glu-rich C-terminal domain (CITED) family of proteins. The encoded protein, also known as melanocyte-specific gene 1, may function as a transcriptional coactivator and may play a role in pigmentation of melanocytes. Alternatively spliced transcript variants have been described. [provided by RefSeq, Jan 2009],

Nanjing BYabscience technology Co.,Ltd

网址: [www.njbybio.com](http://www.njbybio.com)

官方热线: 025-5229-8998

监督电话: 15950492658



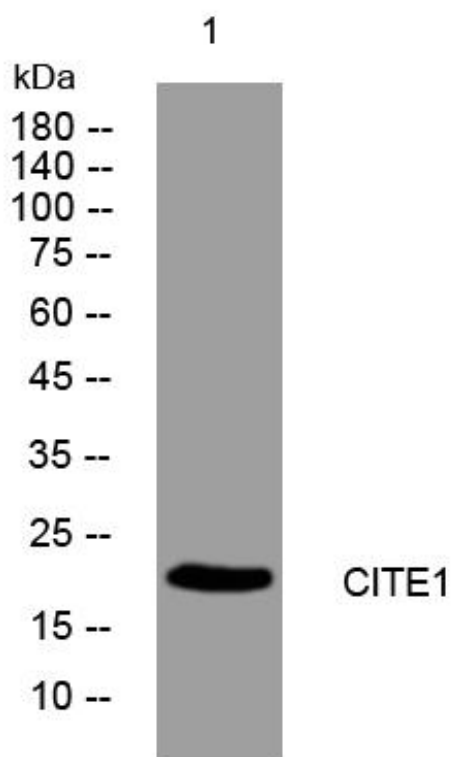
**matters needing attention**

Avoid repeated freezing and thawing!

**Usage suggestions**

This product can be used in immunological reaction related experiments. For more information, please consult technical personnel.

## Products Images



Western Blot analysis of various cells using CITE1 mouse mAb