



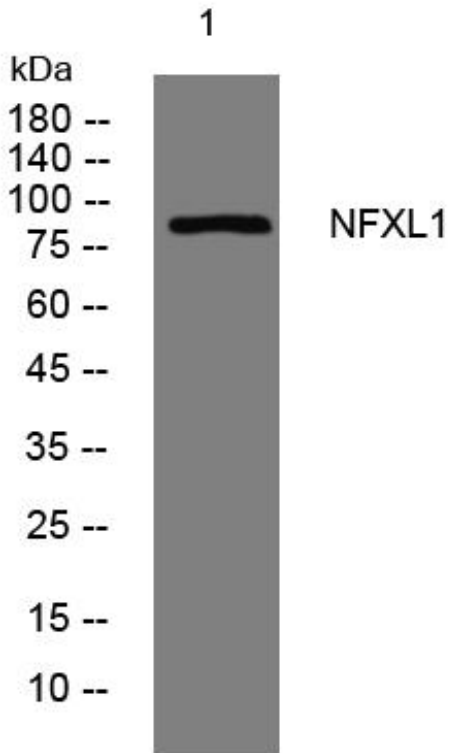
NFXL1 mouse mAb

| | |
|---------------------------|--|
| Catalog No | BYmab-08399 |
| Isotype | IgG |
| Reactivity | Human;Rat;Mouse; |
| Applications | WB |
| Gene Name | NFXL1 OZFP |
| Protein Name | NFXL1 |
| Immunogen | Synthesized peptide derived from human NFXL1 AA range: 103-153 |
| Specificity | This antibody detects endogenous levels of NFXL1 at Human |
| Formulation | Liquid in PBS containing 50% glycerol, 0.5% BSA and 0.02% sodium azide. |
| Source | Monoclonal, Mouse,IgG |
| Purification | The antibody was affinity-purified from mouse antiserum by affinity-chromatography using epitope-specific immunogen. |
| Dilution | WB 1:500-2000 |
| Concentration | 1 mg/ml |
| Purity | ≥90% |
| Storage Stability | -20°C/1 year |
| Synonyms | |
| Observed Band | |
| Cell Pathway | Membrane ; Single-pass membrane protein . |
| Tissue Specificity | |
| Function | similarity:Belongs to the NFX1 family.,similarity:Contains 1 RING-type zinc finger.,similarity:Contains 10 NF-X1-type zinc fingers., |
| Background | |
| matters needing attention | Avoid repeated freezing and thawing! |
| Usage suggestions | This product can be used in immunological reaction related experiments. For more information, please consult technical personnel. |

Nanjing BYabscience technology Co.,Ltd



Products Images



Western Blot analysis of various cells using NFXL1 mouse mAb