



RASL3 mouse mAb

Catalog No	BYmab-08398
Isotype	IgG
Reactivity	Human; Mouse
Applications	WB
Gene Name	RASAL3
Protein Name	RASL3
Immunogen	Synthesized peptide derived from human RASL3 AA range: 297-347
Specificity	This antibody detects endogenous levels of RASL3 at Human/Mouse
Formulation	Liquid in PBS containing 50% glycerol, 0.5% BSA and 0.02% sodium azide.
Source	Monoclonal, Mouse,IgG
Purification	The antibody was affinity-purified from mouse antiserum by affinity-chromatography using epitope-specific immunogen.
Dilution	WB 1:500-2000
Concentration	1 mg/ml
Purity	≥90%
Storage Stability	-20°C/1 year
Synonyms	
Observed Band	111kD
Cell Pathway	Cytoplasm . Cytoplasm, cell cortex .
Tissue Specificity	Predominantly expressed in cells of hematopoietic lineages.
Function	function:May functions as a Ras GTPase-activating protein.,sequence caution:Translated as Arg.,sequence caution:Translation N-terminally shortened.,similarity:Contains 1 C2 domain.,similarity:Contains 1 PH domain.,similarity:Contains 1 Ras-GAP domain.,
Background	
matters needing attention	Avoid repeated freezing and thawing!

Nanjing BYabscience technology Co.,Ltd

网址: www.njbybio.com

官方热线: 025-5229-8998

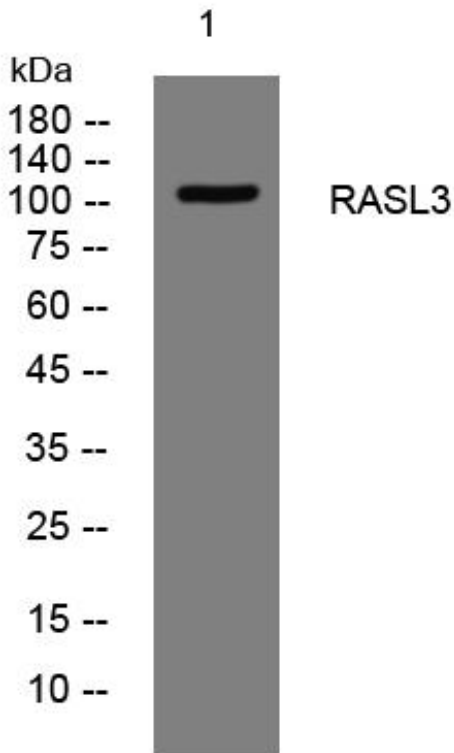
监督电话: 15950492658



Usage suggestions

This product can be used in immunological reaction related experiments. For more information, please consult technical personnel.

Products Images



Western Blot analysis of various cells using RASL3 mouse mAb

Nanjing BYabs science technology Co.,Ltd

网址: www.njbybio.com

官方热线: 025-5229-8998

监督电话: 15950492658