



DISC1 mouse mAb

Catalog No	BYmab-08389
Isotype	IgG
Reactivity	Human; Mouse;Rat
Applications	WB
Gene Name	DISC1 KIAA0457
Protein Name	DISC1
Immunogen	Synthesized peptide derived from human DISC1 AA range: 423-473
Specificity	This antibody detects endogenous levels of DISC1 at Human/Mouse/Rat
Formulation	Liquid in PBS containing 50% glycerol, 0.5% BSA and 0.02% sodium azide.
Source	Monoclonal, Mouse,IgG
Purification	The antibody was affinity-purified from mouse antiserum by affinity-chromatography using epitope-specific immunogen.
Dilution	WB 1:500-2000
Concentration	1 mg/ml
Purity	≥90%
Storage Stability	-20°C/1 year
Synonyms	
Observed Band	
Cell Pathway	Cytoplasm . Cytoplasm, cytoskeleton . Mitochondrion . Cytoplasm, cytoskeleton, microtubule organizing center, centrosome . Cell junction, synapse, postsynaptic density . Colocalizes with NDEL1 in the perinuclear region and the centrosome (By similarity). Localizes to punctate cytoplasmic foci which overlap in part with mitochondria (PubMed:12506198, PubMed:15797709). Colocalizes with PCNT at the centrosome (PubMed:18955030). .
Tissue Specificity	Ubiquitous. Highly expressed in the dentate gyrus of the hippocampus. Also expressed in the temporal and parahippocampal cortices and cells of the white matter.
Function	developmental stage:Expression rises within the dentate gyrus and temporal cortex from the neonatal period to infancy, declines markedly in adolescence, and declines further with aging..disease:A chromosomal aberration involving DISC1 segregates with schizophrenia and related psychiatric disorders in a large Scottish family. Translocation t(1;11)(q42.1;q14.3). The truncated DISC1 protein produced by this translocation is unable to interact with ATF4, ATF5 and

Nanjing BYabscience technology Co.,Ltd



NDEL1.,disease:Genetic variation in DISC1 may be associated with susceptibility to schizoaffective disorder [MIM:181500]. Schizoaffective disorder is a psychiatric condition characterized by the co-occurrence of symptoms of both mood disorder and psychosis.,disease:Genetic variation in DISC1 may be associated with susceptibility to schizophrenia 9 (SCZD9) [MIM:604906]. Schizophrenia [MIM:181500] is a psychosis, a disorder of thought

Background

This gene encodes a protein with multiple coiled coil motifs which is located in the nucleus, cytoplasm and mitochondria. The protein is involved in neurite outgrowth and cortical development through its interaction with other proteins. This gene is disrupted in a t(1;11)(q42.1;q14.3) translocation which segregates with schizophrenia and related psychiatric disorders in a large Scottish family. Alternate transcriptional splice variants, encoding different isoforms, have been characterized. [provided by RefSeq, Jul 2008],

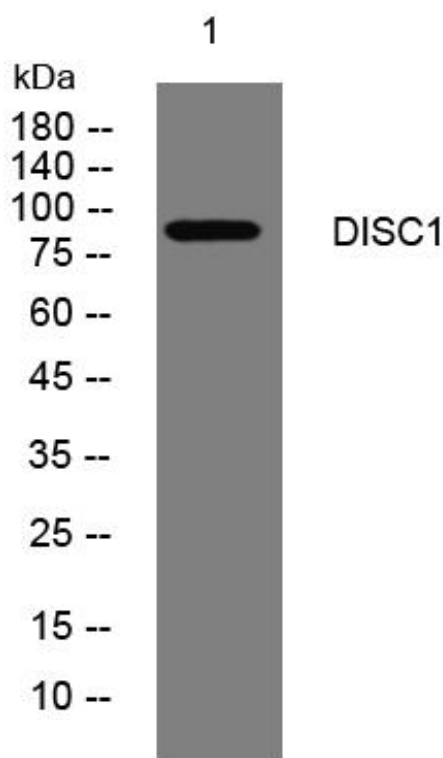
matters needing attention

Avoid repeated freezing and thawing!

Usage suggestions

This product can be used in immunological reaction related experiments. For more information, please consult technical personnel.

Products Images



Western Blot analysis of various cells using DISC1 mouse mAb