



FSD2 mouse mAb

Catalog No	BYmab-08384
Isotype	IgG
Reactivity	Human; Mouse
Applications	WB
Gene Name	FSD2 SPRYD1
Protein Name	FSD2
Immunogen	Synthesized peptide derived from human FSD2 AA range: 156-206
Specificity	This antibody detects endogenous levels of FSD2 at Human/Mouse
Formulation	Liquid in PBS containing 50% glycerol, 0.5% BSA and 0.02% sodium azide.
Source	Monoclonal, Mouse,IgG
Purification	The antibody was affinity-purified from mouse antiserum by affinity-chromatography using epitope-specific immunogen.
Dilution	WB 1:500-2000
Concentration	1 mg/ml
Purity	≥90%
Storage Stability	-20°C/1 year
Synonyms	
Observed Band	
Cell Pathway	Nucleus . Sarcoplasmic reticulum . Cytoplasm, perinuclear region . In skeletal muscles and striated muscles flanks Z-disks. Partially colocalizes with RYR2 in the sarcoplasmic reticulum. .
Tissue Specificity	
Function	similarity:Contains 1 B30.2/SPRY domain.,similarity:Contains 2 fibronectin type-III domains.,
Background	This gene encodes a protein that belongs to the FN3/SPRY family of proteins. Alternate splicing results in multiple transcript variants. [provided by RefSeq, Aug 2013],
matters needing attention	Avoid repeated freezing and thawing!

Nanjing BYabscience technology Co.,Ltd

网址: www.njbybio.com

官方热线: 025-5229-8998

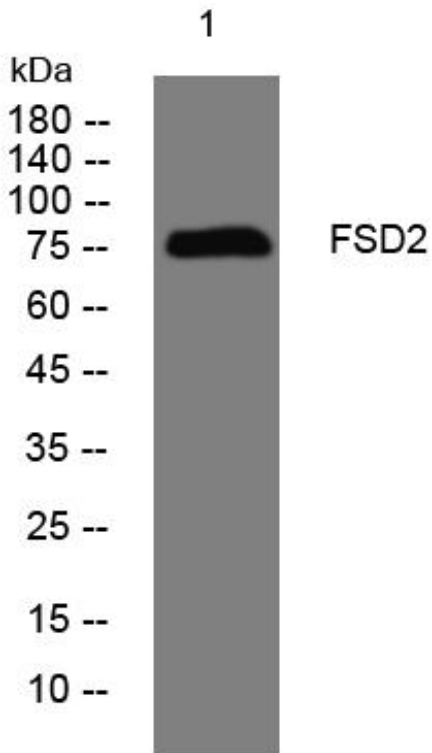
监督电话: 15950492658



Usage suggestions

This product can be used in immunological reaction related experiments. For more information, please consult technical personnel.

Products Images



Western Blot analysis of various cells using FSD2 mouse mAb

Nanjing BYabscience technology Co.,Ltd

网址: www.njbybio.com

官方热线: 025-5229-8998

监督电话: 15950492658