



LINES mouse mAb

| | |
|---------------------------|--|
| Catalog No | BYmab-08382 |
| Isotype | IgG |
| Reactivity | Human; Mouse |
| Applications | WB |
| Gene Name | LINS LINS1 WINS1 |
| Protein Name | LINES |
| Immunogen | Synthesized peptide derived from human LINES AA range: 105-155 |
| Specificity | This antibody detects endogenous levels of LINES at Human/Mouse |
| Formulation | Liquid in PBS containing 50% glycerol, 0.5% BSA and 0.02% sodium azide. |
| Source | Monoclonal, Mouse,IgG |
| Purification | The antibody was affinity-purified from mouse antiserum by affinity-chromatography using epitope-specific immunogen. |
| Dilution | WB 1:500-2000 |
| Concentration | 1 mg/ml |
| Purity | ≥90% |
| Storage Stability | -20°C/1 year |
| Synonyms | |
| Observed Band | |
| Cell Pathway | |
| Tissue Specificity | Expressed in adult testis, prostate, prostate, spleen, thymus, skeletal muscle, fetal kidney and brain. |
| Function | similarity:Belongs to the protein lines family.,tissue specificity:Expressed in adult testis, prostate, prostate, spleen, thymus, skeletal muscle, fetal kidney and brain., |
| Background | The Drosophila segment polarity gene lin encodes a protein, lines, which plays important roles in development of the epidermis and hindgut. This gene encodes a protein containing a lines-like domain. This gene is located on chromosome 15 and clustered with the gene encoding ankyrin repeat and SOCS box-containing protein 7. [provided by RefSeq, Sep 2010], |
| matters needing attention | Avoid repeated freezing and thawing! |

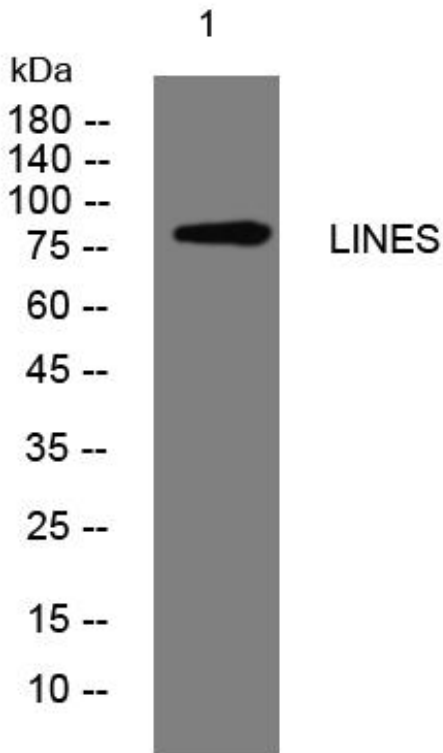
Nanjing BYabscience technology Co.,Ltd



Usage suggestions

This product can be used in immunological reaction related experiments. For more information, please consult technical personnel.

Products Images



Western Blot analysis of various cells using LINES mouse mAb

Nanjing BYabscience technology Co.,Ltd

网址: www.njbybio.com

官方热线: 025-5229-8998

监督电话: 15950492658