



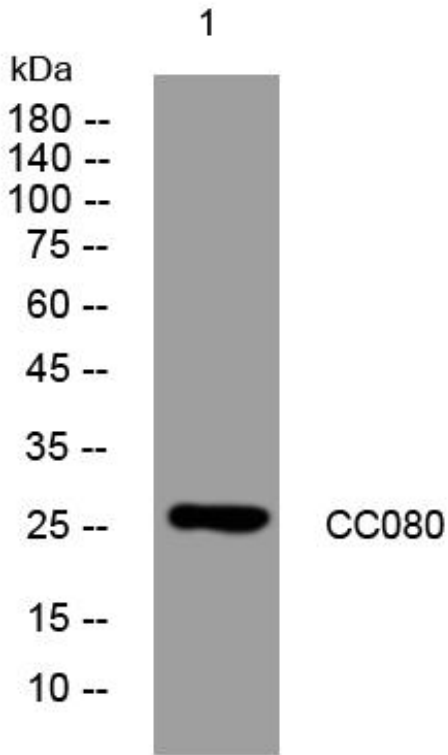
# CC080 mouse mAb

|                                  |   |
|----------------------------------|---|
| <b>Catalog No</b>                | BYmab-08379   |
| <b>Isotype</b>                   | IgG   |
| <b>Reactivity</b>                | Human; Mouse  |
| <b>Applications</b>              | WB  |
| <b>Gene Name</b>                 | C3orf80   |
| <b>Protein Name</b>              | CC080   |
| <b>Immunogen</b>                 | Synthesized peptide derived from human CC080 AA range: 101-151  |
| <b>Specificity</b>               | This antibody detects endogenous levels of CC080 at Human/Mouse   |
| <b>Formulation</b>               | Liquid in PBS containing 50% glycerol, 0.5% BSA and 0.02% sodium azide.   |
| <b>Source</b>                    | Monoclonal, Mouse,IgG   |
| <b>Purification</b>              | The antibody was affinity-purified from mouse antiserum by affinity-chromatography using epitope-specific immunogen.              |
| <b>Dilution</b>                  | WB 1:500-2000   |
| <b>Concentration</b>             | 1 mg/ml   |
| <b>Purity</b>                    | ≥90%  |
| <b>Storage Stability</b>         | -20°C/1 year  |
| <b>Synonyms</b>                  |   |
| <b>Observed Band</b>             |   |
| <b>Cell Pathway</b>              | Membrane ; Single-pass membrane protein .   |
| <b>Tissue Specificity</b>        |   |
| <b>Function</b>                  |   |
| <b>Background</b>                |   |
| <b>matters needing attention</b> | Avoid repeated freezing and thawing!  |
| <b>Usage suggestions</b>         | This product can be used in immunological reaction related experiments. For more information, please consult technical personnel. |

Nanjing BYabscience technology Co.,Ltd



## Products Images



Western Blot analysis of various cells using CC080 mouse mAb