



DHR12 mouse mAb

Catalog No	BYmab-08370
Isotype	IgG
Reactivity	Human;Rat;Mouse;
Applications	WB
Gene Name	DHRS12
Protein Name	DHR12
Immunogen	Synthesized peptide derived from human DHR12 AA range: 83-133
Specificity	This antibody detects endogenous levels of DHR12 at Human
Formulation	Liquid in PBS containing 50% glycerol, 0.5% BSA and 0.02% sodium azide.
Source	Monoclonal, Mouse,IgG
Purification	The antibody was affinity-purified from mouse antiserum by affinity-chromatography using epitope-specific immunogen.
Dilution	WB 1:500-2000
Concentration	1 mg/ml
Purity	≥90%
Storage Stability	-20°C/1 year
Synonyms	
Observed Band	
Cell Pathway	
Tissue Specificity	
Function	function:Putative oxidoreductase.,similarity:Belongs to the short-chain dehydrogenases/reductases (SDR) family.,
Background	This gene encodes a member of the short-chain dehydrogenases/reductases (SDR) family, which has over 46,000 members. Members in this family are enzymes that metabolize many different compounds, such as steroid hormones, prostaglandins, retinoids, lipids and xenobiotics. Alternative splicing results in multiple transcript variants and protein isoforms. [provided by RefSeq, Jul 2012],
matters needing attention	Avoid repeated freezing and thawing!

Nanjing BYabscience technology Co.,Ltd

网址: www.njbybio.com

官方热线: 025-5229-8998

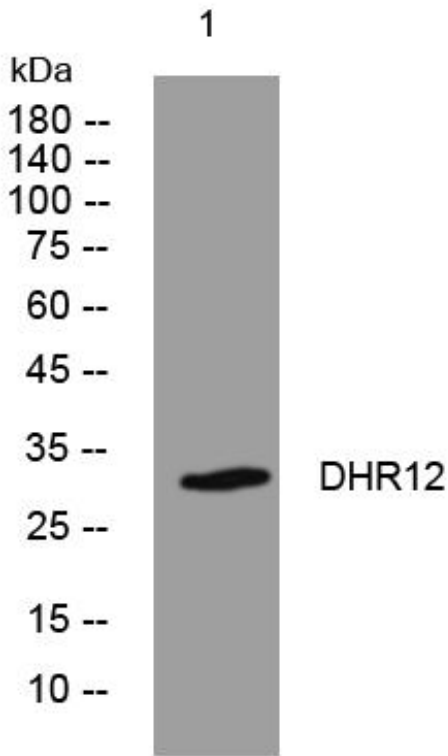
监督电话: 15950492658



Usage suggestions

This product can be used in immunological reaction related experiments. For more information, please consult technical personnel.

Products Images



Western Blot analysis of various cells using DHR12 mouse mAb

Nanjing BYabs science technology Co.,Ltd

网址: www.njbybio.com

官方热线: 025-5229-8998

监督电话: 15950492658