



TXD11 mouse mAb

Catalog No	BYmab-08368
Isotype	IgG
Reactivity	Human; Mouse
Applications	WB
Gene Name	TXNDC11 EFP1
Protein Name	TXD11
Immunogen	Synthesized peptide derived from human TXD11 AA range: 110-160
Specificity	This antibody detects endogenous levels of TXD11 at Human/Mouse
Formulation	Liquid in PBS containing 50% glycerol, 0.5% BSA and 0.02% sodium azide.
Source	Monoclonal, Mouse,IgG
Purification	The antibody was affinity-purified from mouse antiserum by affinity-chromatography using epitope-specific immunogen.
Dilution	WB 1:500-2000
Concentration	1 mg/ml
Purity	≥90%
Storage Stability	-20°C/1 year
Synonyms	
Observed Band	
Cell Pathway	Endoplasmic reticulum membrane ; Single-pass membrane protein .
Tissue Specificity	Widely expressed at low level. Expressed at higher level in thyroid and prostate.
Function	function:May act as a redox regulator involved in DUOX proteins folding. The interaction with DUOX1 and DUOX2 suggest that it belongs to a multiprotein complex constituting the thyroid H ₂ O ₂ generating system. It is however not sufficient to assist DUOX1 and DUOX2 in H ₂ O ₂ generation.,sequence caution:Intron retention.,similarity:Belongs to the protein disulfide isomerase family.,similarity:Contains 2 thioredoxin domains.,subunit:Interacts with the cytoplasmic part of DUOX1 and DUOX2. Interacts with TPO and CYBA.,tissue specificity:Widely expressed at low level. Expressed at higher level in thyroid and prostate.,
Background	

Nanjing BYabscience technology Co.,Ltd

网址: www.njbybio.com

官方热线: 025-5229-8998

监督电话: 15950492658



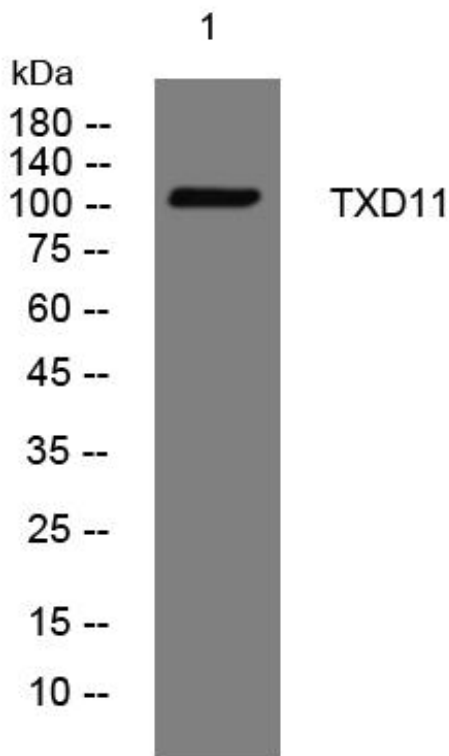
matters needing attention

Avoid repeated freezing and thawing!

Usage suggestions

This product can be used in immunological reaction related experiments. For more information, please consult technical personnel.

Products Images



Western Blot analysis of various cells using TXD11 mouse mAb