



USBP1 mouse mAb

Catalog No	BYmab-08358
Isotype	IgG
Reactivity	Human; Mouse;Rat
Applications	WB
Gene Name	USHBP1 AIEBP MCC2
Protein Name	USBP1
Immunogen	Synthesized peptide derived from human USBP1 AA range: 185-235
Specificity	This antibody detects endogenous levels of USBP1 at Human/Mouse/Rat
Formulation	Liquid in PBS containing 50% glycerol, 0.5% BSA and 0.02% sodium azide.
Source	Monoclonal, Mouse,IgG
Purification	The antibody was affinity-purified from mouse antiserum by affinity-chromatography using epitope-specific immunogen.
Dilution	WB 1:500-2000
Concentration	1 mg/ml
Purity	≥90%
Storage Stability	-20°C/1 year
Synonyms	
Observed Band	
Cell Pathway	
Tissue Specificity	Highest level of expression in heart, and moderate to low expression in skeletal muscle, kidney, liver, small intestine, placenta and lung.
Function	similarity:Belongs to the MCC family.,subunit:Interacts via its C-terminus with the first PDZ domain of USH1C.,tissue specificity:Highest level of expression in heart, and moderate to low expression in skeletal muscle, kidney, liver, small intestine, placenta and lung.,
Background	
matters needing attention	Avoid repeated freezing and thawing!

Nanjing BYabscience technology Co.,Ltd

网址: www.njbybio.com

官方热线: 025-5229-8998

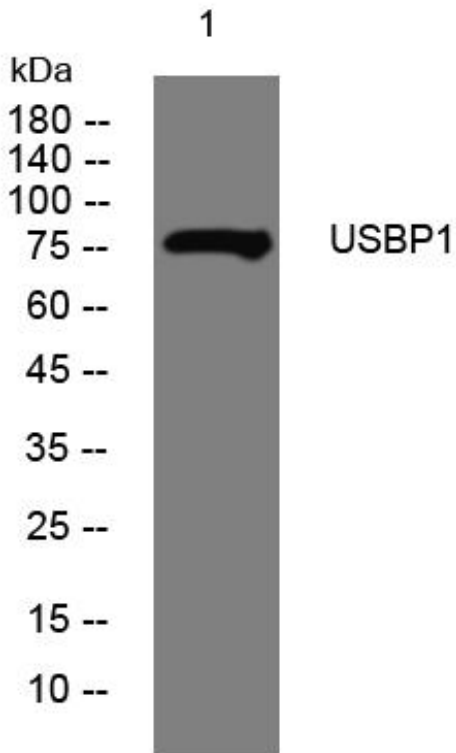
监督电话: 15950492658



Usage suggestions

This product can be used in immunological reaction related experiments. For more information, please consult technical personnel.

Products Images



Western Blot analysis of various cells using USBP1 mouse mAb

Nanjing BYabscience technology Co.,Ltd

网址: www.njbybio.com

官方热线: 025-5229-8998

监督电话: 15950492658