



ADPRM mouse mAb

Catalog No	BYmab-08357
Isotype	IgG
Reactivity	Human; Mouse;Rat
Applications	WB
Gene Name	ADPRM C17orf48 MDS006 Nbla03831
Protein Name	ADPRM
Immunogen	Synthesized peptide derived from human ADPRM AA range: 225-275
Specificity	This antibody detects endogenous levels of ADPRM at Human/Mouse/Rat
Formulation	Liquid in PBS containing 50% glycerol, 0.5% BSA and 0.02% sodium azide.
Source	Monoclonal, Mouse,IgG
Purification	The antibody was affinity-purified from mouse antiserum by affinity-chromatography using epitope-specific immunogen.
Dilution	WB 1:500-2000
Concentration	1 mg/ml
Purity	≥90%
Storage Stability	-20°C/1 year
Synonyms	
Observed Band	
Cell Pathway	cytosol,integral component of membrane,
Tissue Specificity	
Function	catalytic activity:ADP-ribose + H(2)O = AMP + D-ribose 5-phosphate.,catalytic activity:CDP-choline + H(2)O = CMP + phosphocholine.,catalytic activity:CDP-glycerol + H(2)O = CMP + sn-glycerol 3-phosphate.,cofactor:Magnesium.,function:hydrolyzes ADP-ribose, IDP-ribose, CDP-glycerol, CDP-choline and CDP-ethanolamine, but not other non-reducing ADP-sugars or CDP-glucose. May be involved in immune cell signaling as suggested by the second-messenger role of ADP-ribose, which activates TRPM2 as a mediator of oxidative/nitrosative stress.,similarity:Belongs to the ADPRibase-Mn family.,subunit:Monomer.,
Background	

Nanjing BYabscience technology Co.,Ltd



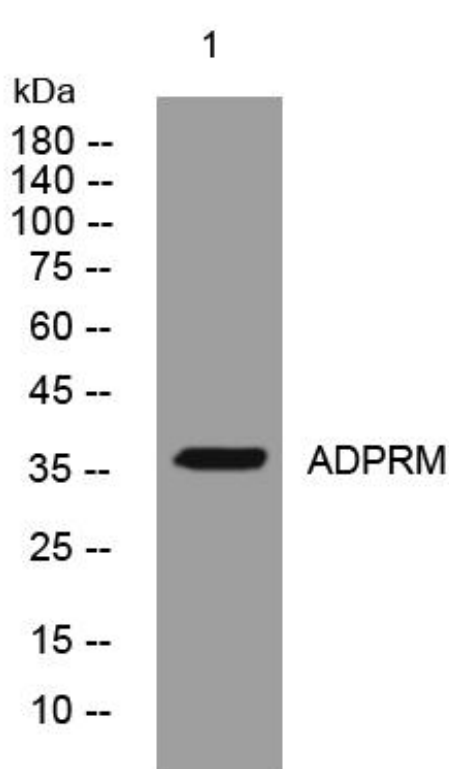
matters needing attention

Avoid repeated freezing and thawing!

Usage suggestions

This product can be used in immunological reaction related experiments. For more information, please consult technical personnel.

Products Images



Western Blot analysis of various cells using ADPRM mouse mAb