



T132E mouse mAb

| | |
|--------------------|--|
| Catalog No | BYmab-08331 |
| Isotype | IgG |
| Reactivity | Human; Mouse |
| Applications | WB |
| Gene Name | TMEM132E |
| Protein Name | T132E |
| Immunogen | Synthesized peptide derived from human T132E AA range: 486-536 |
| Specificity | This antibody detects endogenous levels of T132E at Human/Mouse |
| Formulation | Liquid in PBS containing 50% glycerol, 0.5% BSA and 0.02% sodium azide. |
| Source | Monoclonal, Mouse,IgG |
| Purification | The antibody was affinity-purified from mouse antiserum by affinity-chromatography using epitope-specific immunogen. |
| Dilution | WB 1:500-2000 |
| Concentration | 1 mg/ml |
| Purity | ≥90% |
| Storage Stability | -20°C/1 year |
| Synonyms | |
| Observed Band | |
| Cell Pathway | Membrane ; Single-pass type I membrane protein . |
| Tissue Specificity | |
| Function | disease:TMEM132E gene is identified as one gene located in a region involved in a heterozygous deletion of approximately 4.7 Mb; this deletion, involving the NF1 gene and contiguous genes lying in its flanking regions, is observed in one patient with NF1 and 17q11.2 microdeletion syndrome [MIM:162200]. The NF1 microdeletion syndrome is often characterized by a more severe phenotype than that observed in the majority of NF1 patients. Indeed, patients with NF1 microdeletion often show variable facial dysmorphism, mental retardation, developmental delay, and an excessive number of neurofibromas.,similarity:Belongs to the TMEM132 family., |
| Background | |

Nanjing BYabscience technology Co.,Ltd



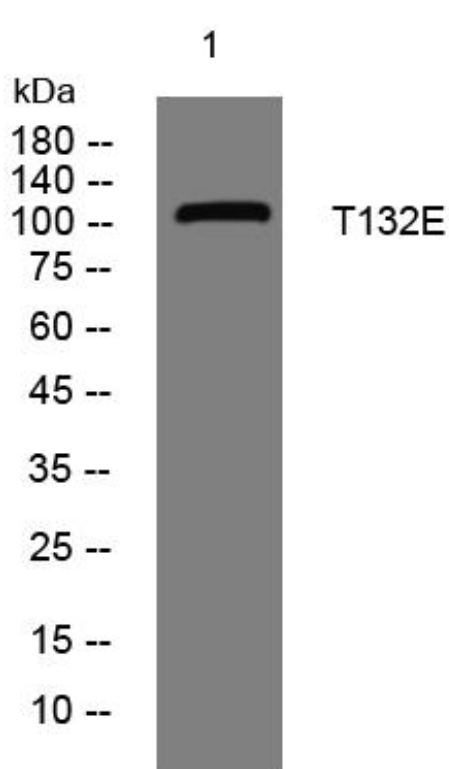
matters needing attention

Avoid repeated freezing and thawing!

Usage suggestions

This product can be used in immunological reaction related experiments. For more information, please consult technical personnel.

Products Images



Western Blot analysis of various cells using T132E mouse mAb