



FKB11 mouse mAb

Catalog No	BYmab-08324
Isotype	IgG
Reactivity	Human; Mouse
Applications	WB
Gene Name	FKBP11 FKBP19 UNQ336/PRO535
Protein Name	FKB11
Immunogen	Synthesized peptide derived from human FKB11 AA range: 58-108
Specificity	This antibody detects endogenous levels of FKB11 at Human/Mouse
Formulation	Liquid in PBS containing 50% glycerol, 0.5% BSA and 0.02% sodium azide.
Source	Monoclonal, Mouse,IgG
Purification	The antibody was affinity-purified from mouse antiserum by affinity-chromatography using epitope-specific immunogen.
Dilution	WB 1:500-2000
Concentration	1 mg/ml
Purity	≥90%
Storage Stability	-20°C/1 year
Synonyms	
Observed Band	
Cell Pathway	Membrane ; Single-pass membrane protein .
Tissue Specificity	
Function	catalytic activity:Peptidylproline (omega=180) = peptidylproline (omega=0).,function:PPlases accelerate the folding of proteins during protein synthesis.,similarity:Belongs to the FKBP-type PPlase family.,similarity:Contains 1 PPlase FKBP-type domain.,
Background	FKBP11 belongs to the FKBP family of peptidyl-prolyl cis/trans isomerases, which catalyze the folding of proline-containing polypeptides. The peptidyl-prolyl isomerase activity of FKBP proteins is inhibited by the immunosuppressant compounds FK506 and rapamycin (Rulten et al., 2006 [PubMed 16596453]).[supplied by OMIM, Mar 2008],

Nanjing BYabscience technology Co.,Ltd

网址: www.njbybio.com

官方热线: 025-5229-8998

监督电话: 15950492658



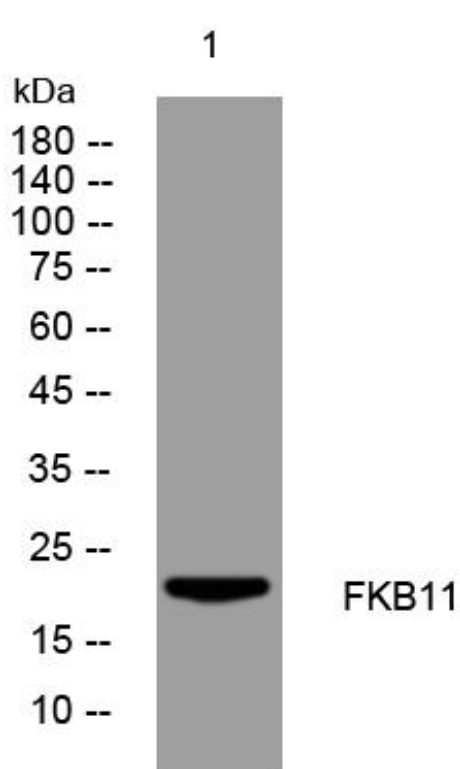
matters needing attention

Avoid repeated freezing and thawing!

Usage suggestions

This product can be used in immunological reaction related experiments. For more information, please consult technical personnel.

Products Images



Western Blot analysis of various cells using FKB11 mouse mAb