



TMTC2 mouse mAb

Catalog No	BYmab-08310
Isotype	IgG
Reactivity	Human; Mouse
Applications	WB
Gene Name	TMTC2
Protein Name	TMTC2
Immunogen	Synthesized peptide derived from human TMTC2 AA range: 184-234
Specificity	This antibody detects endogenous levels of TMTC2 at Human/Mouse
Formulation	Liquid in PBS containing 50% glycerol, 0.5% BSA and 0.02% sodium azide.
Source	Monoclonal, Mouse,IgG
Purification	The antibody was affinity-purified from mouse antiserum by affinity-chromatography using epitope-specific immunogen.
Dilution	WB 1:500-2000
Concentration	1 mg/ml
Purity	≥90%
Storage Stability	-20°C/1 year
Synonyms	
Observed Band	
Cell Pathway	Membrane ; Multi-pass membrane protein . Endoplasmic reticulum .
Tissue Specificity	
Function	similarity:Belongs to the TMTC family.,similarity:Contains 10 TPR repeats.,
Background	The protein encoded by this gene is an integral membrane protein localized to the endoplasmic reticulum (ER). The encoded protein contains many tetratricopeptide repeats, sequences known for being involved in protein-protein interactions. This protein binds both the calcium uptake pump SERCA2B and the carbohydrate-binding chaperone calnexin, and it appears to play a role in calcium homeostasis in the ER. Multiple transcript variants encoding different isoforms have been found for this gene. [provided by RefSeq, Feb 2016],

Nanjing BYabscience technology Co.,Ltd

网址: www.njbybio.com

官方热线: 025-5229-8998

监督电话: 15950492658



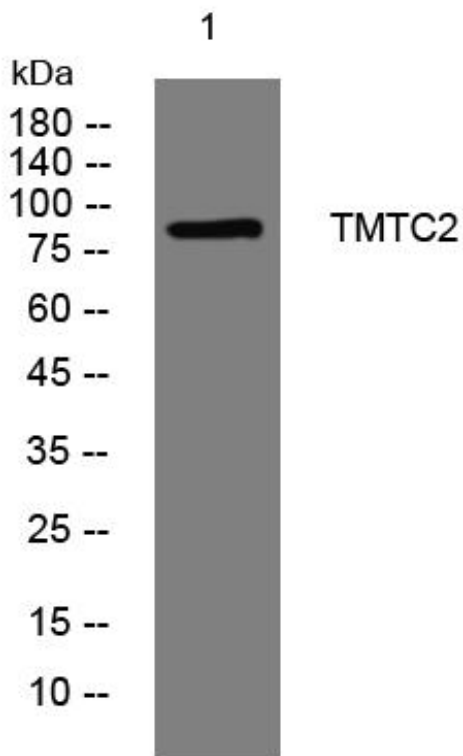
matters needing attention

Avoid repeated freezing and thawing!

Usage suggestions

This product can be used in immunological reaction related experiments. For more information, please consult technical personnel.

Products Images



Western Blot analysis of various cells using TMTC2 mouse mAb