



# WASH1 mouse mAb

<b>Catalog No</b>	BYmab-08299
<b>Isotype</b>	IgG
<b>Reactivity</b>	Human; Mouse;Rat
<b>Applications</b>	WB
<b>Gene Name</b>	WASH1 FAM39E
<b>Protein Name</b>	WASH1
<b>Immunogen</b>	Synthesized peptide derived from human WASH1 AA range: 163-213
<b>Specificity</b>	This antibody detects endogenous levels of WASH1 at Human/Mouse/Rat
<b>Formulation</b>	Liquid in PBS containing 50% glycerol, 0.5% BSA and 0.02% sodium azide.
<b>Source</b>	Monoclonal, Mouse,IgG
<b>Purification</b>	The antibody was affinity-purified from mouse antiserum by affinity-chromatography using epitope-specific immunogen.
<b>Dilution</b>	WB 1:500-2000
<b>Concentration</b>	1 mg/ml
<b>Purity</b>	≥90%
<b>Storage Stability</b>	-20°C/1 year
<b>Synonyms</b>	
<b>Observed Band</b>	
<b>Cell Pathway</b>	Early endosome membrane . Recycling endosome membrane . Late endosome . Cytoplasmic vesicle, autophagosome . Cytoplasm, cytoskeleton, microtubule organizing center, centrosome, centriole . Localization to the endosome membrane is mediated via its interaction with WASHC2 (PubMed:19922874). Localizes to MMP14-positive late endosomes and transiently to invadopodia (PubMed:24344185). Localized to Salmonella typhimurium entry sites (By similarity). .
<b>Tissue Specificity</b>	
<b>Function</b>	miscellaneous:The telomeric region of chromosome 9p is paralogous to the pericentromeric regions of chromosome 9 as well as to 2q. Paralogous regions contain 7 transcriptional units, including CXYorf1. Duplicated CXYorf1 genes are also present in the Xq/Yq pseudoautosomal region, as well as on chromosome 1 and 15. The chromosome 16 copy seems to be a pseudogene.,similarity:Belongs to the FAM39 family.,similarity:Contains 1 WH2 domain.,

**Nanjing BYabscience technology Co.,Ltd**

网址: [www.njbybio.com](http://www.njbybio.com)

官方热线: 025-5229-8998

监督电话: 15950492658



## Background

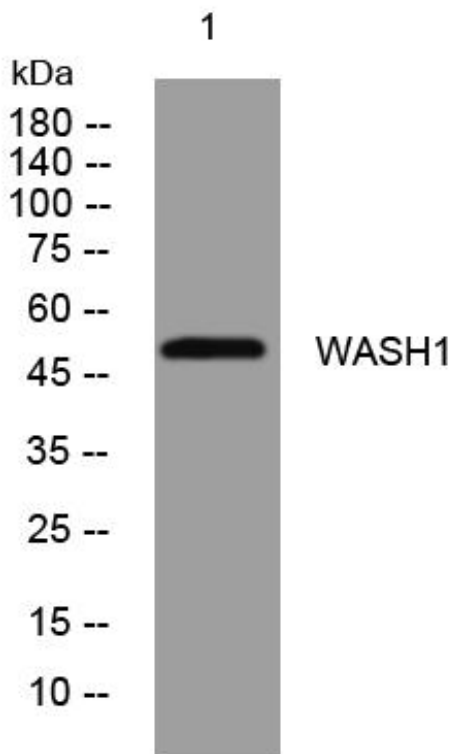
### matters needing attention

Avoid repeated freezing and thawing!

### Usage suggestions

This product can be used in immunological reaction related experiments. For more information, please consult technical personnel.

## Products Images



Western Blot analysis of various cells using WASH1 mouse mAb