



S22AN mouse mAb

Catalog No	BYmab-08291
Isotype	IgG
Reactivity	Human; Mouse;Rat
Applications	WB
Gene Name	SLC22A23 C6orf85
Protein Name	S22AN
Immunogen	Synthesized peptide derived from human S22AN AA range: 600-650
Specificity	This antibody detects endogenous levels of S22AN at Human/Mouse/Rat
Formulation	Liquid in PBS containing 50% glycerol, 0.5% BSA and 0.02% sodium azide.
Source	Monoclonal, Mouse,IgG
Purification	The antibody was affinity-purified from mouse antiserum by affinity-chromatography using epitope-specific immunogen.
Dilution	WB 1:500-2000
Concentration	1 mg/ml
Purity	≥90%
Storage Stability	-20°C/1 year
Synonyms	
Observed Band	
Cell Pathway	Membrane ; Multi-pass membrane protein .
Tissue Specificity	
Function	similarity:Belongs to the major facilitator superfamily. Organic cation transporter family.,
Background	SLC22A23 belongs to a large family of transmembrane proteins that function as uniporters, symporters, and antiporters to transport organic ions across cell membranes (Jacobsson et al., 2007 [PubMed 17714910]).[supplied by OMIM, Mar 2008],
matters needing attention	Avoid repeated freezing and thawing!

Nanjing BYabscience technology Co.,Ltd

网址: www.njbybio.com

官方热线: 025-5229-8998

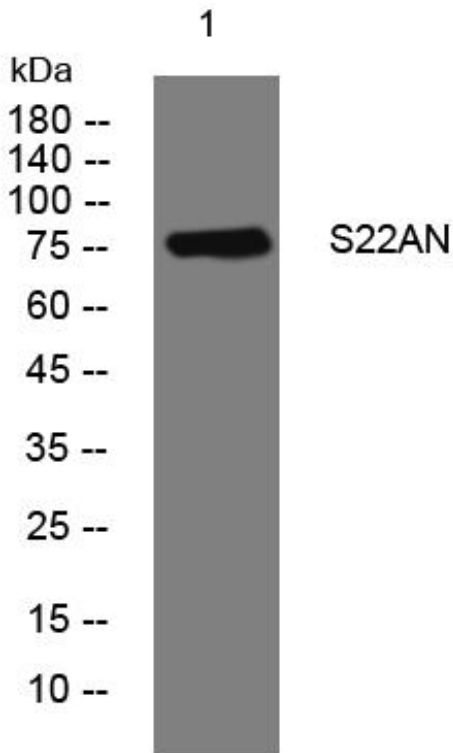
监督电话: 15950492658



Usage suggestions

This product can be used in immunological reaction related experiments. For more information, please consult technical personnel.

Products Images



Western Blot analysis of various cells using S22AN mouse mAb

Nanjing BYabs science technology Co.,Ltd

网址: www.njbybio.com

官方热线: 025-5229-8998

监督电话: 15950492658