



ASPX mouse mAb

Catalog No	BYmab-08287
Isotype	IgG
Reactivity	Human; Mouse
Applications	WB
Gene Name	ACRV1
Protein Name	ASPX
Immunogen	Synthesized peptide derived from human ASPX AA range: 180-230
Specificity	This antibody detects endogenous levels of ASPX at Human/Mouse
Formulation	Liquid in PBS containing 50% glycerol, 0.5% BSA and 0.02% sodium azide.
Source	Monoclonal, Mouse,IgG
Purification	The antibody was affinity-purified from mouse antiserum by affinity-chromatography using epitope-specific immunogen.
Dilution	WB 1:500-2000
Concentration	1 mg/ml
Purity	≥90%
Storage Stability	-20°C/1 year
Synonyms	
Observed Band	
Cell Pathway	Cytoplasmic vesicle, secretory vesicle, acrosome. Nascent acrosomal vesicle of Golgi phase spermatids.
Tissue Specificity	Testis.
Function	alternative products:Additional isoforms seem to exist,subcellular location:Nascent acrosomal vesicle of Golgi phase spermatids.,tissue specificity:Testis.,
Background	This gene encodes a testis-specific, differentiation antigen, acrosomal vesicle protein 1, that arises within the acrosomal vesicle during spermatogenesis, and is associated with the acrosomal membranes and matrix of mature sperm. The acrosomal vesicle protein 1 may be involved in sperm-zona binding or penetration. Alternatively spliced transcript variants have been described. [provided by RefSeq, Nov 2010],

Nanjing BYabscience technology Co.,Ltd

网址: www.njbybio.com

官方热线: 025-5229-8998

监督电话: 15950492658



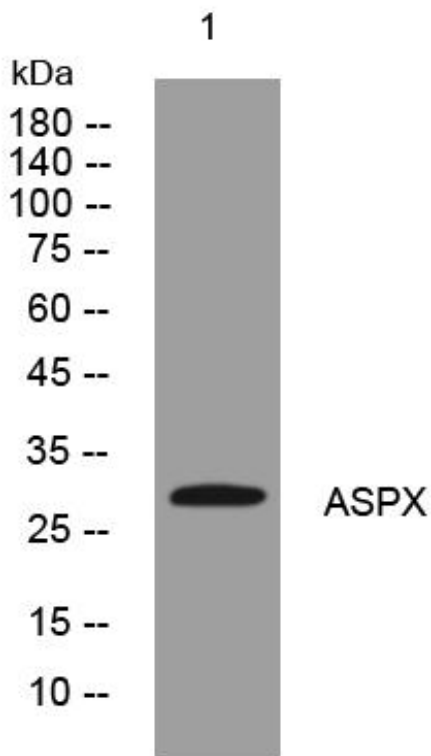
matters needing attention

Avoid repeated freezing and thawing!

Usage suggestions

This product can be used in immunological reaction related experiments. For more information, please consult technical personnel.

Products Images



Western Blot analysis of various cells using ASPX mouse mAb

Nanjing BYabs science technology Co.,Ltd

网址: www.njbybio.com

官方热线: 025-5229-8998

监督电话: 15950492658