



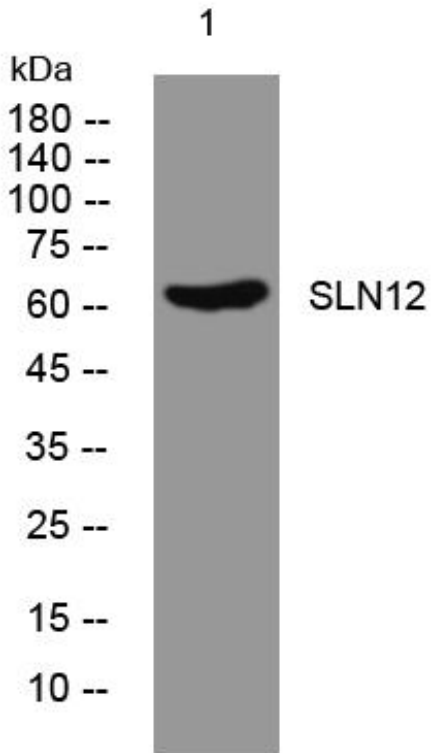
SLN12 mouse mAb

Catalog No	BYmab-08281
Isotype	IgG
Reactivity	Human;Rat;Mouse;
Applications	WB
Gene Name	SLFN12
Protein Name	SLN12
Immunogen	Synthesized peptide derived from human SLN12 AA range: 51-101
Specificity	This antibody detects endogenous levels of SLN12 at Human
Formulation	Liquid in PBS containing 50% glycerol, 0.5% BSA and 0.02% sodium azide.
Source	Monoclonal, Mouse,IgG
Purification	The antibody was affinity-purified from mouse antiserum by affinity-chromatography using epitope-specific immunogen.
Dilution	WB 1:500-2000
Concentration	1 mg/ml
Purity	≥90%
Storage Stability	-20°C/1 year
Synonyms	
Observed Band	
Cell Pathway	Nucleus . Cytoplasm, cytosol .
Tissue Specificity	
Function	similarity:Belongs to the Schlafen family.,
Background	
matters needing attention	Avoid repeated freezing and thawing!
Usage suggestions	This product can be used in immunological reaction related experiments. For more information, please consult technical personnel.

Nanjing BYabscience technology Co.,Ltd



Products Images



Western Blot analysis of various cells using SLN12 mouse mAb