



SARAF mouse mAb

Catalog No	BYmab-08280
Isotype	IgG
Reactivity	Human; Mouse;Rat
Applications	WB
Gene Name	TMEM66 SARAF XTP3 HSPC035 NPD003 PSEC0019 UNQ1967/PRO4499
Protein Name	SARAF
Immunogen	Synthesized peptide derived from human SARAF AA range: 277-327
Specificity	This antibody detects endogenous levels of SARAF at Human/Mouse/Rat
Formulation	Liquid in PBS containing 50% glycerol, 0.5% BSA and 0.02% sodium azide.
Source	Monoclonal, Mouse,IgG
Purification	The antibody was affinity-purified from mouse antiserum by affinity-chromatography using epitope-specific immunogen.
Dilution	WB 1:500-2000
Concentration	1 mg/ml
Purity	≥90%
Storage Stability	-20°C/1 year
Synonyms	
Observed Band	
Cell Pathway	Endoplasmic reticulum membrane ; Single-pass type I membrane protein . Translocates to the endoplasmic reticulum-plasma membrane (ER-PM) region in a STIM1-dependent manner following cytosolic Ca(2+) elevation.; [Isoform 2]: Endoplasmic reticulum membrane; Single-pass type I membrane protein.
Tissue Specificity	Highly expressed in macrophages.
Function	similarity:Belongs to the TMEM66 family.,tissue specificity:Highly expressed in macrophages.,
Background	
matters needing attention	Avoid repeated freezing and thawing!

Nanjing BYabscience technology Co.,Ltd

网址: www.njbybio.com

官方热线: 025-5229-8998

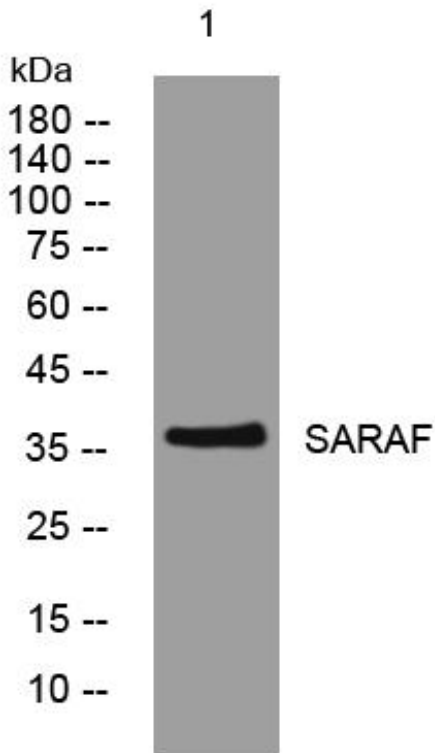
监督电话: 15950492658



Usage suggestions

This product can be used in immunological reaction related experiments. For more information, please consult technical personnel.

Products Images



Western Blot analysis of various cells using SARAF mouse mAb

Nanjing BYabs science technology Co.,Ltd

网址: www.njbybio.com

官方热线: 025-5229-8998

监督电话: 15950492658