



# NPAP1 mouse mAb

Catalog No	BYmab-08279
Isotype	IgG
Reactivity	Human;Rat;Mouse;
Applications	WB
Gene Name	NPAP1 C15orf2
Protein Name	NPAP1
Immunogen	Synthesized peptide derived from human NPAP1 AA range: 960-1010
Specificity	This antibody detects endogenous levels of NPAP1 at Human
Formulation	Liquid in PBS containing 50% glycerol, 0.5% BSA and 0.02% sodium azide.
Source	Monoclonal, Mouse,IgG
Purification	The antibody was affinity-purified from mouse antiserum by affinity-chromatography using epitope-specific immunogen.
Dilution	WB 1:500-2000
Concentration	1 mg/ml
Purity	≥90%
Storage Stability	-20°C/1 year
Synonyms	
Observed Band	
Cell Pathway	Nucleus, nucleoplasm . Nucleus inner membrane . Colocalizes with the NPC and nuclear lamins at the nuclear periphery.
Tissue Specificity	Testis-specific in adults. In fetal brain expressed only from the paternal allele.
Function	function:May be involved in spermatogenesis.,tissue specificity:Testis-specific in adults.,
Background	This gene is located in the Prader-Willi syndrome region on chromosome 15. This gene is biallelically expressed in adult testis and brain but is paternally imprinted in fetal brain. Defects in this gene may be associated with Prader-Willi syndrome. [provided by RefSeq, Aug 2012],
matters needing attention	Avoid repeated freezing and thawing!

Nanjing BYabscience technology Co.,Ltd

网址: [www.njbybio.com](http://www.njbybio.com)

官方热线: 025-5229-8998

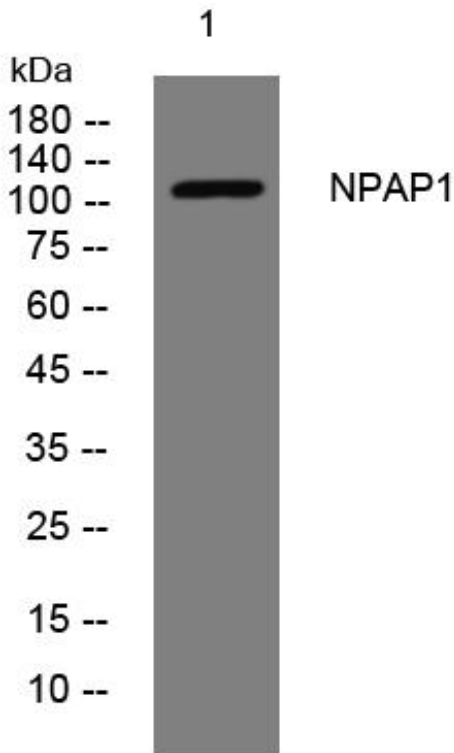
监督电话: 15950492658



### Usage suggestions

This product can be used in immunological reaction related experiments. For more information, please consult technical personnel.

## Products Images



Western Blot analysis of various cells using NPAP1 mouse mAb

Nanjing BYabscience technology Co.,Ltd

网址: [www.njbybio.com](http://www.njbybio.com)

官方热线: 025-5229-8998

监督电话: 15950492658