



ZDH14 mouse mAb

Catalog No	BYmab-08273
Isotype	IgG
Reactivity	Human; Mouse
Applications	WB
Gene Name	ZDHHC14
Protein Name	ZDH14
Immunogen	Synthesized peptide derived from human ZDH14 AA range: 346-396
Specificity	This antibody detects endogenous levels of ZDH14 at Human/Mouse
Formulation	Liquid in PBS containing 50% glycerol, 0.5% BSA and 0.02% sodium azide.
Source	Monoclonal, Mouse,IgG
Purification	The antibody was affinity-purified from mouse antiserum by affinity-chromatography using epitope-specific immunogen.
Dilution	WB 1:500-2000
Concentration	1 mg/ml
Purity	≥90%
Storage Stability	-20°C/1 year
Synonyms	
Observed Band	
Cell Pathway	Endoplasmic reticulum membrane ; Multi-pass membrane protein . Golgi apparatus, Golgi stack membrane ; Multi-pass membrane protein .
Tissue Specificity	Widely expressed.
Function	catalytic activity:Palmitoyl-CoA + protein-cysteine = S-palmitoyl protein + CoA.;domain:The DHHC domain is required for palmitoyltransferase activity.;similarity:Belongs to the DHHC palmitoyltransferase family. ERF2/ZDHHC9 subfamily.;similarity:Contains 1 DHHC-type zinc finger.,
Background	
matters needing attention	Avoid repeated freezing and thawing!

Nanjing BYabscience technology Co.,Ltd

网址: www.njbybio.com

官方热线: 025-5229-8998

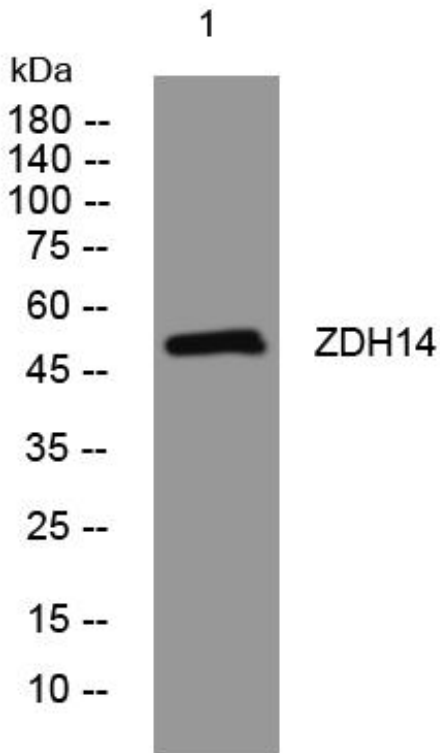
监督电话: 15950492658



Usage suggestions

This product can be used in immunological reaction related experiments. For more information, please consult technical personnel.

Products Images



Western Blot analysis of various cells using ZDH14 mouse mAb

Nanjing BYabs science technology Co.,Ltd

网址: www.njbybio.com

官方热线: 025-5229-8998

监督电话: 15950492658