



WDFY2 mouse mAb

Catalog No	BYmab-08265
Isotype	IgG
Reactivity	Human; Mouse
Applications	WB
Gene Name	WDFY2 WDF2 ZFYVE22
Protein Name	WDFY2
Immunogen	Synthesized peptide derived from human WDFY2 AA range: 344-394
Specificity	This antibody detects endogenous levels of WDFY2 at Human/Mouse
Formulation	Liquid in PBS containing 50% glycerol, 0.5% BSA and 0.02% sodium azide.
Source	Monoclonal, Mouse,IgG
Purification	The antibody was affinity-purified from mouse antiserum by affinity-chromatography using epitope-specific immunogen.
Dilution	WB 1:500-2000
Concentration	1 mg/ml
Purity	≥90%
Storage Stability	-20°C/1 year
Synonyms	
Observed Band	
Cell Pathway	Endosome . Early endosome . Cytoplasm . Localizes to intracellular vesicles (PubMed:16792529). Colocalizes with VAMP2 and PRKCZ in intracellular vesicles (PubMed:17313651). Colocalizes with AKT2 in early endosomes (By similarity). .
Tissue Specificity	
Function	similarity:Contains 1 FYVE-type zinc finger.,similarity:Contains 7 WD repeats.,
Background	This gene encodes a protein that contains two WD domains and an FYVE zinc finger region. The function of this gene is unknown. An alternatively spliced transcript variant of this gene may exist. [provided by RefSeq, Jul 2008],
matters needing attention	Avoid repeated freezing and thawing!

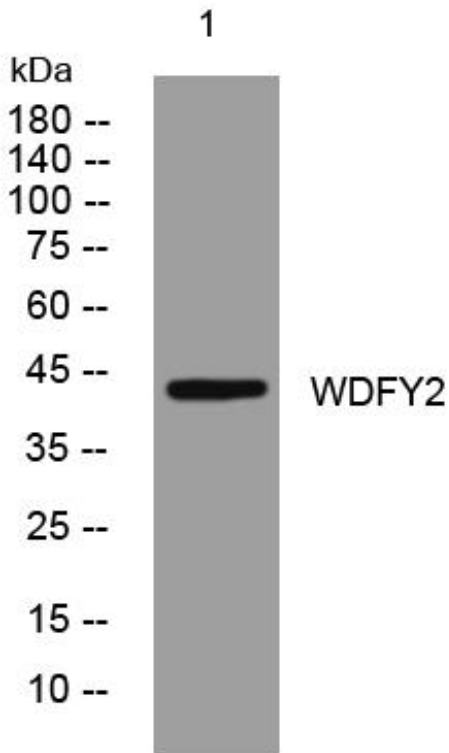
Nanjing BYabscience technology Co.,Ltd



Usage suggestions

This product can be used in immunological reaction related experiments. For more information, please consult technical personnel.

Products Images



Western Blot analysis of various cells using WDFY2 mouse mAb

Nanjing BYabs science technology Co.,Ltd

网址: www.njbybio.com

官方热线: 025-5229-8998

监督电话: 15950492658