



MTCH2 mouse mAb

Catalog No	BYmab-08263
Isotype	IgG
Reactivity	Human; Mouse
Applications	WB
Gene Name	MTCH2 MIMP HSPC032
Protein Name	MTCH2
Immunogen	Synthesized peptide derived from human MTCH2 AA range: 59-109
Specificity	This antibody detects endogenous levels of MTCH2 at Human/Mouse
Formulation	Liquid in PBS containing 50% glycerol, 0.5% BSA and 0.02% sodium azide.
Source	Monoclonal, Mouse,IgG
Purification	The antibody was affinity-purified from mouse antiserum by affinity-chromatography using epitope-specific immunogen.
Dilution	WB 1:500-2000
Concentration	1 mg/ml
Purity	≥90%
Storage Stability	-20°C/1 year
Synonyms	
Observed Band	
Cell Pathway	Mitochondrion outer membrane ; Multi-pass membrane protein .
Tissue Specificity	
Function	function:The substrate transported is not yet known. Induces mitochondrial depolarization.,similarity:Belongs to the mitochondrial carrier family.,similarity:Contains 2 Solcar repeats.,
Background	This gene encodes a member of the SLC25 family of nuclear-encoded transporters that are localized in the inner mitochondrial membrane. Members of this superfamily are involved in many metabolic pathways and cell functions. Genome-wide association studies in human have identified single-nucleotide polymorphisms in several loci associated with obesity. This gene is one such locus, which is highly expressed in white adipose tissue and adipocytes, and thought to play a regulatory role in adipocyte differentiation and biology. Alternatively spliced transcript variants encoding different isoforms have been

Nanjing BYabscience technology Co.,Ltd



found for this gene. A recent study showed this gene to be an authentic stop codon readthrough target, and that its mRNA can give rise to an additional C-terminally extended isoform by use of an alternative in-frame translation termination codon. [provided by RefSeq, Nov 2015],

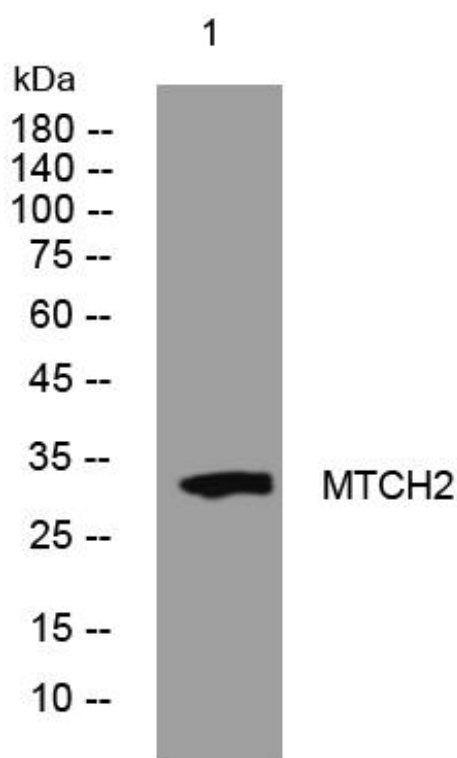
matters needing attention

Avoid repeated freezing and thawing!

Usage suggestions

This product can be used in immunological reaction related experiments. For more information, please consult technical personnel.

Products Images



Western Blot analysis of various cells using MTCH2 mouse mAb