



# ASIC5 mouse mAb

Catalog No	BYmab-08247
Isotype	IgG
Reactivity	Human; Mouse;Rat
Applications	WB
Gene Name	ASIC5 ACCN5 HINAC
Protein Name	ASIC5
Immunogen	Synthesized peptide derived from human ASIC5 AA range: 412-462
Specificity	This antibody detects endogenous levels of ASIC5 at Human/Mouse/Rat
Formulation	Liquid in PBS containing 50% glycerol, 0.5% BSA and 0.02% sodium azide.
Source	Monoclonal, Mouse,IgG
Purification	The antibody was affinity-purified from mouse antiserum by affinity-chromatography using epitope-specific immunogen.
Dilution	WB 1:500-2000
Concentration	1 mg/ml
Purity	≥90%
Storage Stability	-20°C/1 year
Synonyms	
Observed Band	
Cell Pathway	Cell membrane ; Multi-pass membrane protein .
Tissue Specificity	Detected in small intestine, duodenum and jejunum. Detected at very low levels in testis and rectum.
Function	function:Cation channel that gives rise to very low constitutive currents in the absence of activation. The activated channel exhibits selectivity for sodium, and is inhibited by amiloride.,similarity:Belongs to the amiloride-sensitive sodium channel family.,subunit:Homotetramer or heterotetramer.,tissue specificity:Detected in small intestine, duodenum and jejunum. Detected at very low levels in testis and rectum.,
Background	This gene belongs to the amiloride-sensitive Na <sup>+</sup> channel and degenerin (NaC/DEG) family, members of which have been identified in many animal species ranging from the nematode to human. The amiloride-sensitive Na <sup>+</sup> channel encoded by this gene is primarily expressed in the small intestine, however, its exact function is not known. [provided by RefSeq, Jul 2008],

Nanjing BYabscience technology Co.,Ltd



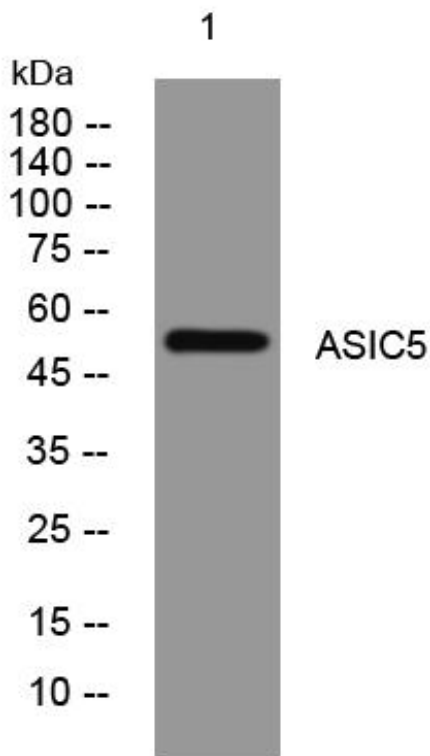
**matters needing attention**

Avoid repeated freezing and thawing!

**Usage suggestions**

This product can be used in immunological reaction related experiments. For more information, please consult technical personnel.

## Products Images



Western Blot analysis of various cells using ASIC5 mouse mAb