



MAMD1 mouse mAb

| | |
|---------------------------|--|
| Catalog No | BYmab-08241 |
| Isotype | IgG |
| Reactivity | Human; Mouse |
| Applications | WB |
| Gene Name | MAMLD1 CG1 CXorf6 |
| Protein Name | MAMD1 |
| Immunogen | Synthesized peptide derived from human MAMD1 AA range: 189-239 |
| Specificity | This antibody detects endogenous levels of MAMD1 at Human/Mouse |
| Formulation | Liquid in PBS containing 50% glycerol, 0.5% BSA and 0.356% sodium azide. |
| Source | Monoclonal, Mouse,IgG |
| Purification | The antibody was affinity-purified from mouse antiserum by affinity-chromatography using epitope-specific immunogen. |
| Dilution | WB 1:500-2000 |
| Concentration | 1 mg/ml |
| Purity | ≥90% |
| Storage Stability | -20°C/1 year |
| Synonyms | Mastermind-like domain-containing protein 1 (F18) (Protein CG1) |
| Observed Band | 85kD |
| Cell Pathway | Nucleus . Punctate nuclear localization. |
| Tissue Specificity | Expressed in fetal brain, fetal ovary and fetal testis. Expressed in adult brain, ovary, skin, testis, uterus. Highly expressed in skeletal muscle. |
| Function | caution:The sequence shown here is derived from an Ensembl automatic analysis pipeline and should be considered as preliminary data.,disease:Defects in MAMLD1 are a cause of X-linked hypospadias type 2 (HYSP2) [MIM:300758]. Hypospadias is a common malformation in which the urethra opens on the ventral side of the penis. It is considered a complex disorder with both genetic and environmental factors involved in the pathogenesis. Hypospadias can occur alone on an apparently multifactorial basis or as part of syndromes.,similarity:Belongs to the mastermind family.,tissue specificity:Preferentially expressed in skeletal muscle., |
| Background | This gene encodes a mastermind-like domain containing protein. This protein may function as a transcriptional co-activator. Mutations in this gene are the cause of |

Nanjing BYabscience technology Co.,Ltd



X-linked hypospadias type 2. Alternate splicing results in multiple transcript variants. [provided by RefSeq, Apr 2010],

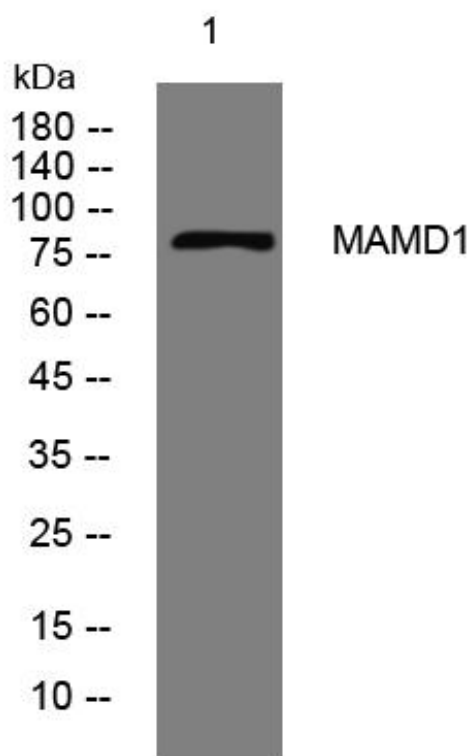
matters needing attention

Avoid repeated freezing and thawing!

Usage suggestions

This product can be used in immunological reaction related experiments. For more information, please consult technical personnel.

Products Images



Western Blot analysis of various cells using MAMD1 mouse mAb