



YMEL1 mouse mAb

| | |
|---------------------------|--|
| Catalog No | BYmab-08238 |
| Isotype | IgG |
| Reactivity | Human; Mouse;Rat |
| Applications | WB |
| Gene Name | YME1L1 FTSH1 YME1L UNQ1868/PRO4304 |
| Protein Name | YMEL1 |
| Immunogen | Synthesized peptide derived from human YMEL1 AA range: 136-186 |
| Specificity | This antibody detects endogenous levels of YMEL1 at Human/Mouse/Rat |
| Formulation | Liquid in PBS containing 50% glycerol, 0.5% BSA and 0.353% sodium azide. |
| Source | Monoclonal, Mouse,IgG |
| Purification | The antibody was affinity-purified from mouse antiserum by affinity-chromatography using epitope-specific immunogen. |
| Dilution | WB 1:500-2000 |
| Concentration | 1 mg/ml |
| Purity | ≥90% |
| Storage Stability | -20°C/1 year |
| Synonyms | ATP-dependent zinc metalloprotease YME1L1 (EC 3.4.24.-) (ATP-dependent metalloprotease FtsH1) (Meg-4) (Presenilin-associated metalloprotease) (PAMP) (YME1-like protein 1) |
| Observed Band | 85kD |
| Cell Pathway | Mitochondrion inner membrane . Mitochondrion . |
| Tissue Specificity | High expression in cardiac and skeletal muscle mitochondria. |
| Function | cofactor: Binds 1 zinc ion per subunit .,function: Putative ATP-dependent protease which plays a role in mitochondrial protein metabolism.,similarity: In the C-terminal section; belongs to the peptidase M41 family.,similarity: In the N-terminal section; belongs to the AAA ATPase family., |
| Background | The protein encoded by this gene is the human ortholog of yeast mitochondrial AAA metalloprotease, Yme1p. It is localized in the mitochondria and can functionally complement a yme1 disruptant yeast strain. It is proposed that this gene plays a role in mitochondrial protein metabolism and could be involved in mitochondrial pathologies. Three transcript variants encoding different isoforms |

Nanjing BYabscience technology Co.,Ltd



have been found for this gene. [provided by RefSeq, Dec 2011],

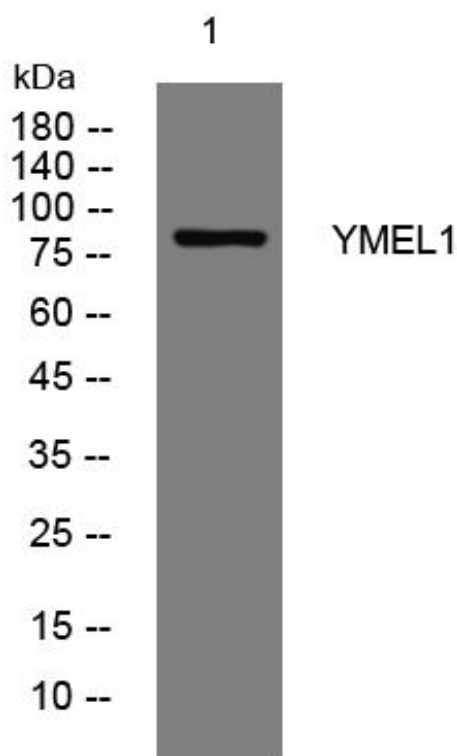
matters needing attention

Avoid repeated freezing and thawing!

Usage suggestions

This product can be used in immunological reaction related experiments. For more information, please consult technical personnel.

Products Images



Western Blot analysis of various cells using YMEL1 mouse mAb