



# CMIP mouse mAb

<b>Catalog No</b>	BYmab-08230
<b>Isotype</b>	IgG
<b>Reactivity</b>	Human; Mouse
<b>Applications</b>	WB
<b>Gene Name</b>	CMIP KIAA1694 TCMIP
<b>Protein Name</b>	CMIP
<b>Immunogen</b>	Synthesized peptide derived from human CMIP AA range: 105-155
<b>Specificity</b>	This antibody detects endogenous levels of CMIP at Human/Mouse
<b>Formulation</b>	Liquid in PBS containing 50% glycerol, 0.5% BSA and 0.345% sodium azide.
<b>Source</b>	Monoclonal, Mouse,IgG
<b>Purification</b>	The antibody was affinity-purified from mouse antiserum by affinity-chromatography using epitope-specific immunogen.
<b>Dilution</b>	WB 1:500-2000
<b>Concentration</b>	1 mg/ml
<b>Purity</b>	≥90%
<b>Storage Stability</b>	-20°C/1 year
<b>Synonyms</b>	C-Maf-inducing protein (c-Mip) (Truncated c-Maf-inducing protein) (Tc-Mip)
<b>Observed Band</b>	85kD
<b>Cell Pathway</b>	Nucleus . Cytoplasm . Isoform 2 is translocated to the nucleus and is specifically recruited during minimal change nephrotic syndrome (MCNS) (PubMed:12939343) (PubMed:15616553). Detected in nuclear and cytoplasmic compartments during MCNS relapse (PubMed:12939343) (PubMed:15616553). Expressed in cytoplasm only during MCNS remission and absent in normal patients (PubMed:12939343). .
<b>Tissue Specificity</b>	Isoform 1 is expressed in peripheral blood mononuclear cells and kidney. Lower expression in brain and liver. Expression is down-regulated in activated cells. Isoform 2 is expressed in lymphocyte precursors, however, expression shuts down during maturation and differentiation in thymus and fetal liver.
<b>Function</b>	developmental stage:Expressed in fetal liver.,disease:Isoform 2 expression is up-regulated in MCNS.,function:Plays a role in T-cell signaling pathway. Isoform 2 may play a role in T-helper 2 (Th2) signaling pathway and seems to represent the first proximal signaling protein that links T-cell receptor-mediated signal to the activation of c-Maf Th2 specific factor.,similarity:Contains 1 PH

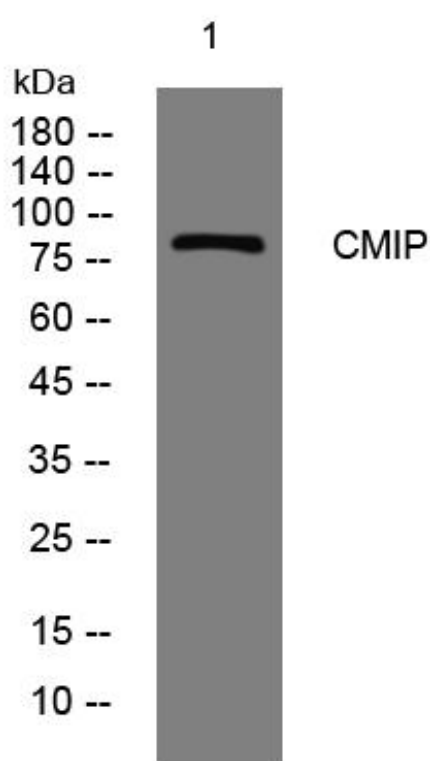
**Nanjing BYabscience technology Co.,Ltd**



domain.,subcellular location:Isoform 2 is translocated to the nucleus and is specifically recruited during minimal change nephrotic syndrome (MCNS). Detected in nuclear and cytoplasmic compartments during MCNS relapse. Expressed in cytoplasm only during MCNS remission and absent in normal patients.,subunit:Interacts with FLNA.,tissue specificity:Isoform 1 is expressed in peripheral blood mononuclear cells and kidney. Lower expression in brain and liver. Expression is down-regulated in activated cells. Is

<b>Background</b>	This gene encodes a c-Maf inducing protein that plays a role in T-cell signaling pathway. Alternatively spliced transcript variants encoding different isoforms have been described for this gene. [provided by RefSeq, Aug 2011],
<b>matters needing attention</b>	Avoid repeated freezing and thawing!
<b>Usage suggestions</b>	This product can be used in immunological reaction related experiments. For more information, please consult technical personnel.

## Products Images



Western Blot analysis of various cells using CMIP mouse mAb