



PSD2 mouse mAb

Catalog No	BYmab-08225
Isotype	IgG
Reactivity	Human; Mouse
Applications	WB
Gene Name	PSD2
Protein Name	PSD2
Immunogen	Synthesized peptide derived from human PSD2 AA range: 57-107
Specificity	This antibody detects endogenous levels of PSD2 at Human/Mouse
Formulation	Liquid in PBS containing 50% glycerol, 0.5% BSA and 0.340% sodium azide.
Source	Monoclonal, Mouse,IgG
Purification	The antibody was affinity-purified from mouse antiserum by affinity-chromatography using epitope-specific immunogen.
Dilution	WB 1:500-2000
Concentration	1 mg/ml
Purity	≥90%
Storage Stability	-20°C/1 year
Synonyms	PH and SEC7 domain-containing protein 2 (Pleckstrin homology and SEC7 domain-containing protein 2)
Observed Band	85kD
Cell Pathway	Cell membrane ; Single-pass membrane protein . Cell projection, ruffle membrane . Cleavage furrow . In interphase associated with the plasma membrane, in particular with membrane ruffling regions. In cells undergoing cytokinesis, transiently found around the ingressing cleavage furrow. Not detected at the midbody ring/Flemming body. .
Tissue Specificity	Amygdala,Brain,
Function	similarity:Belongs to the PSD family.,similarity:Contains 1 PH domain.,similarity:Contains 1 SEC7 domain.,
Background	
matters needing attention	Avoid repeated freezing and thawing!

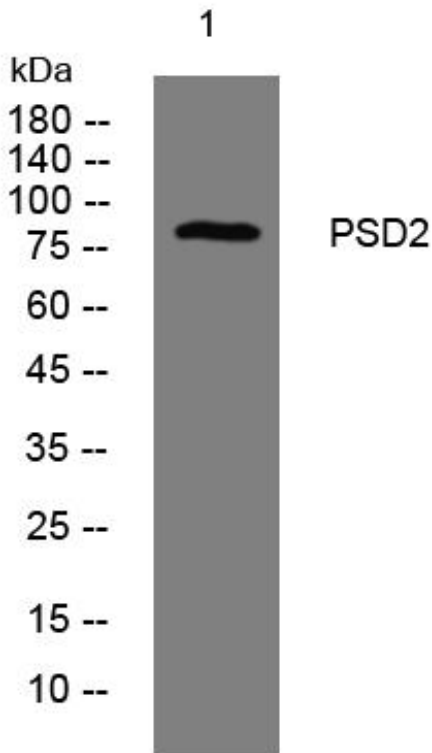
Nanjing BYabscience technology Co.,Ltd



Usage suggestions

This product can be used in immunological reaction related experiments. For more information, please consult technical personnel.

Products Images



Western Blot analysis of various cells using PSD2 mouse mAb

Nanjing BYabs science technology Co.,Ltd

网址: www.njbybio.com

官方热线: 025-5229-8998

监督电话: 15950492658