



LRFN1 mouse mAb

Catalog No	BYmab-08224
Isotype	IgG
Reactivity	Human; Mouse;Rat
Applications	WB
Gene Name	LRFN1 KIAA1484 SALM2
Protein Name	LRFN1
Immunogen	Synthesized peptide derived from human LRFN1 AA range: 529-579
Specificity	This antibody detects endogenous levels of LRFN1 at Human/Mouse/Rat
Formulation	Liquid in PBS containing 50% glycerol, 0.5% BSA and 0.339% sodium azide.
Source	Monoclonal, Mouse,IgG
Purification	The antibody was affinity-purified from mouse antiserum by affinity-chromatography using epitope-specific immunogen.
Dilution	WB 1:500-2000
Concentration	1 mg/ml
Purity	≥90%
Storage Stability	-20°C/1 year
Synonyms	Leucine-rich repeat and fibronectin type III domain-containing protein 1 (Synaptic adhesion-like molecule 2)
Observed Band	85kD
Cell Pathway	Membrane ; Single-pass type I membrane protein . Cell junction, synapse . Cell junction, synapse, postsynaptic density membrane . Detected in excitatory, but not inhibitory, synaptic plasma membrane. .
Tissue Specificity	Brain,Ovary,Uterus,
Function	function:Involved in the regulation of excitatory synapses.,PTM:Glycosylated.,PTM:Phosphorylated upon DNA damage, probably by ATM or ATR.,similarity:Belongs to the LRFN family.,similarity:Contains 1 fibronectin type-III domain.,similarity:Contains 1 Ig-like (immunoglobulin-like) domain.,similarity:Contains 7 LRR (leucine-rich) repeats.,subunit:Interacts with DLG1, DLGAP1, AMPA receptors and NMDA receptors (By similarity). Interacts with DLG4.,

Background

Nanjing BYabscience technology Co.,Ltd

网址: www.njbybio.com

官方热线: 025-5229-8998

监督电话: 15950492658



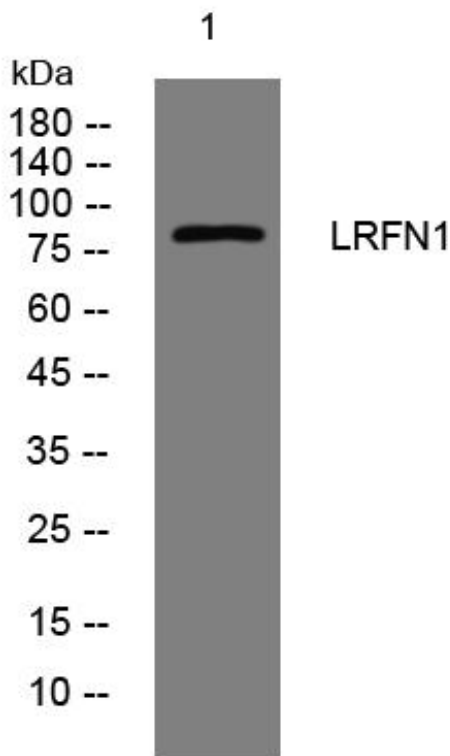
matters needing attention

Avoid repeated freezing and thawing!

Usage suggestions

This product can be used in immunological reaction related experiments. For more information, please consult technical personnel.

Products Images



Western Blot analysis of various cells using LRFN1 mouse mAb

Nanjing BYabs science technology Co.,Ltd

网址: www.njbybio.com

官方热线: 025-5229-8998

监督电话: 15950492658