



# TLE1 mouse mAb

|                    |  |
|--------------------|--|
| Catalog No         | BYmab-08222  |
| Isotype            | IgG  |
| Reactivity         | Human; Mouse   |
| Applications       | WB   |
| Gene Name          | TLE1   |
| Protein Name       | TLE1   |
| Immunogen          | Synthesized peptide derived from human TLE1 AA range: 300-350  |
| Specificity        | This antibody detects endogenous levels of TLE1 at Human/Mouse   |
| Formulation        | Liquid in PBS containing 50% glycerol, 0.5% BSA and 0.337% sodium azide.   |
| Source             | Monoclonal, Mouse,IgG  |
| Purification       | The antibody was affinity-purified from mouse antiserum by affinity-chromatography using epitope-specific immunogen.   |
| Dilution           | WB 1:500-2000  |
| Concentration      | 1 mg/ml  |
| Purity             | ≥90%   |
| Storage Stability  | -20°C/1 year   |
| Synonyms           | Transducin-like enhancer protein 1 (E(Sp1) homolog) (Enhancer of split groucho-like protein 1) (ESG1)  |
| Observed Band      | 85kD   |
| Cell Pathway       | Nucleus . Nuclear and chromatin-associated, depending on isoforms and phosphorylation status. Hyperphosphorylation decreases the affinity for nuclear components.  |
| Tissue Specificity | In all tissues examined, mostly in brain, liver and muscle.  |
| Function           | function:Transcriptional corepressor that binds to a number of transcription factors. Inhibits NF-kappa-B-regulated gene expression. Inhibits the transcriptional activation mediated by FOXA2, and by CTNNB1 and TCF family members in Wnt signaling. The effects of full-length TLE family members may be modulated by association with dominant-negative AES. Unusual function as coactivator for ESRRG.,PTM:Phosphorylated, probably by CDC2. The degree of phosphorylation varies throughout the cell cycle, and is highest at the G2/M transition. Becomes hyperphosphorylated in response to cell differentiation and interaction with HES1 or RUNX1.,similarity:Belongs to the WD repeat Groucho/TLE family.,similarity:Contains 6 WD repeats.,subcellular |

Nanjing BYabscience technology Co.,Ltd



location:Nuclear and chromatin-associated, depending on isoforms and phosphorylation status. Hyperphosphorylation decreases the affinity for nuclear components.,

#### Background

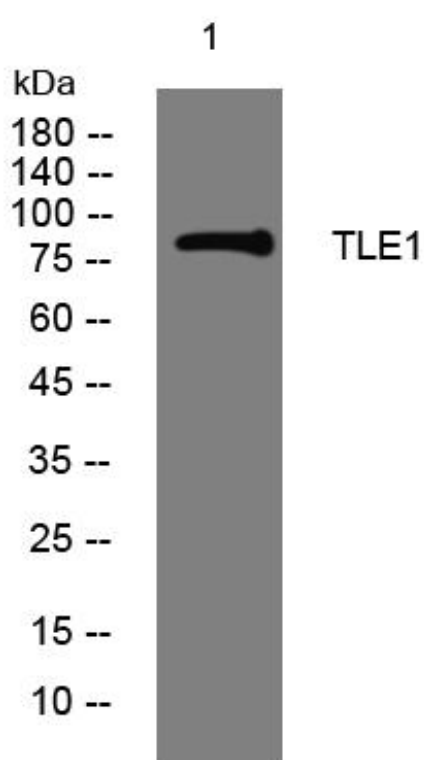
#### matters needing attention

Avoid repeated freezing and thawing!

#### Usage suggestions

This product can be used in immunological reaction related experiments. For more information, please consult technical personnel.

### Products Images



Western Blot analysis of various cells using TLE1 mouse mAb