



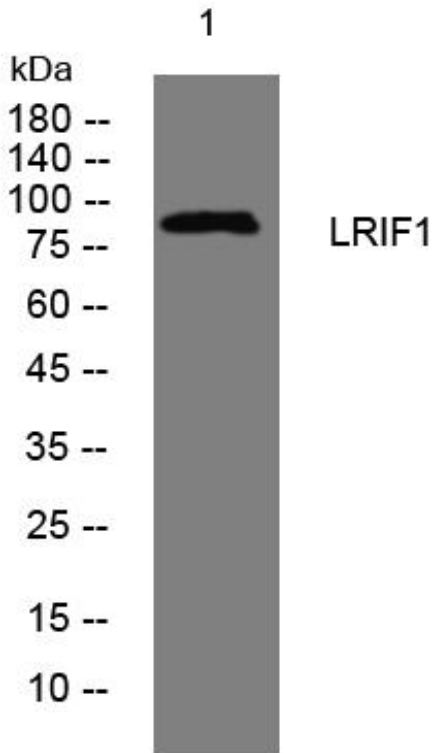
LRIF1 mouse mAb

Catalog No	BYmab-08213
Isotype	IgG
Reactivity	Human; Mouse;Rat
Applications	WB
Gene Name	LRIF1 C1orf103 RIF1
Protein Name	LRIF1
Immunogen	Synthesized peptide derived from human LRIF1 AA range: 210-260
Specificity	This antibody detects endogenous levels of LRIF1 at Human/Mouse/Rat
Formulation	Liquid in PBS containing 50% glycerol, 0.5% BSA and 0.328% sodium azide.
Source	Monoclonal, Mouse,IgG
Purification	The antibody was affinity-purified from mouse antiserum by affinity-chromatography using epitope-specific immunogen.
Dilution	WB 1:500-2000
Concentration	1 mg/ml
Purity	≥90%
Storage Stability	-20°C/1 year
Synonyms	Ligand-dependent nuclear receptor-interacting factor 1 (Receptor-interacting factor 1)
Observed Band	85kD
Cell Pathway	Chromosome . Nucleus matrix . Localizes to Barr body; recruited by SMCHD1. .
Tissue Specificity	Widely expressed, with the highest expression levels in heart, liver and placenta.
Function	
Background	
matters needing attention	Avoid repeated freezing and thawing!
Usage suggestions	This product can be used in immunological reaction related experiments. For more information, please consult technical personnel.

Nanjing BYabscience technology Co.,Ltd



Products Images



Western Blot analysis of various cells using LRIF1 mouse mAb