



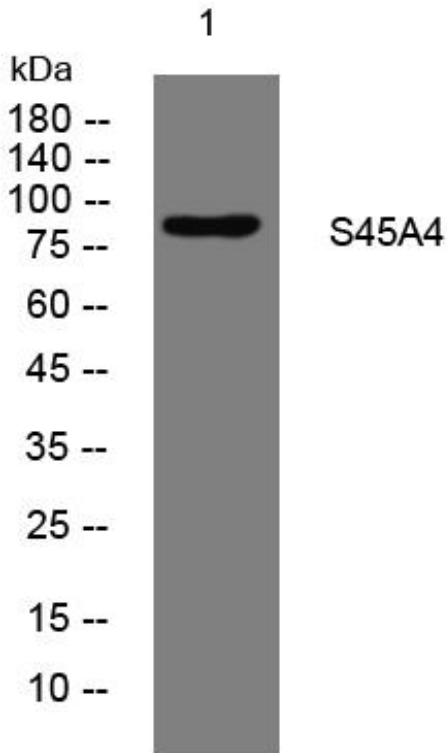
S45A4 mouse mAb

Catalog No	BYmab-08211
Isotype	IgG
Reactivity	Human; Mouse
Applications	WB
Gene Name	SLC45A4 KIAA1126
Protein Name	S45A4
Immunogen	Synthesized peptide derived from human S45A4 AA range: 60-110
Specificity	This antibody detects endogenous levels of S45A4 at Human/Mouse
Formulation	Liquid in PBS containing 50% glycerol, 0.5% BSA and 0.326% sodium azide.
Source	Monoclonal, Mouse,IgG
Purification	The antibody was affinity-purified from mouse antiserum by affinity-chromatography using epitope-specific immunogen.
Dilution	WB 1:500-2000
Concentration	1 mg/ml
Purity	≥90%
Storage Stability	-20°C/1 year
Synonyms	Solute carrier family 45 member 4
Observed Band	85kD
Cell Pathway	Membrane ; Multi-pass membrane protein .
Tissue Specificity	Brain,Pancreas,Testis,
Function	similarity:Belongs to the glycoside-pentoside-hexuronide (GPH) cation symporter transporter (TC 2.A.2) family.,
Background	
matters needing attention	Avoid repeated freezing and thawing!
Usage suggestions	This product can be used in immunological reaction related experiments. For more information, please consult technical personnel.

Nanjing BYabscience technology Co.,Ltd



Products Images



Western Blot analysis of various cells using S45A4 mouse mAb