



LRCH2 mouse mAb

Catalog No	BYmab-08192
Isotype	IgG
Reactivity	Human; Mouse
Applications	WB
Gene Name	LRCH2 KIAA1495
Protein Name	LRCH2
Immunogen	Synthesized peptide derived from human LRCH2 AA range: 34-84
Specificity	This antibody detects endogenous levels of LRCH2 at Human/Mouse
Formulation	Liquid in PBS containing 50% glycerol, 0.5% BSA and 0.307% sodium azide.
Source	Monoclonal, Mouse,IgG
Purification	The antibody was affinity-purified from mouse antiserum by affinity-chromatography using epitope-specific immunogen.
Dilution	WB 1:500-2000
Concentration	1 mg/ml
Purity	≥90%
Storage Stability	-20°C/1 year
Synonyms	Leucine-rich repeat and calponin homology domain-containing protein 2
Observed Band	85kD
Cell Pathway	
Tissue Specificity	Brain,Embryo,PCR rescued clones,
Function	similarity:Contains 1 CH (calponin-homology) domain.,similarity:Contains 9 LRR (leucine-rich) repeats.,
Background	This gene encodes a member of the leucine-rich repeat and calponin homology domain-containing protein family. These family members contain multiple N-terminal leucine-rich repeats, in addition to a C-terminal calponin homology domain, a type of domain that mediates interactions with actin filaments. These proteins are conserved across animal species, and studies of a similar Drosophila protein indicate a function as a cytoskeletal scaffolding protein. Alternative splicing of this gene results in multiple transcript variants. [provided by RefSeq, Sep 2011],

Nanjing BYabscience technology Co.,Ltd

网址: www.njbybio.com

官方热线: 025-5229-8998

监督电话: 15950492658



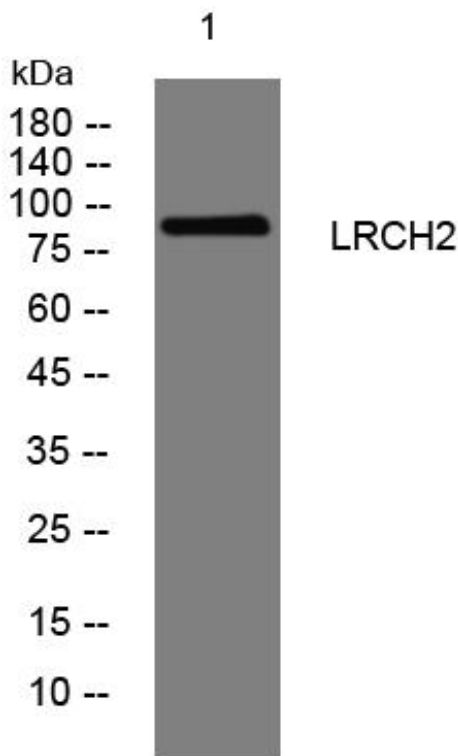
matters needing attention

Avoid repeated freezing and thawing!

Usage suggestions

This product can be used in immunological reaction related experiments. For more information, please consult technical personnel.

Products Images



Western Blot analysis of various cells using LRCH2 mouse mAb

Nanjing BYabs science technology Co.,Ltd

网址: www.njbybio.com

官方热线: 025-5229-8998

监督电话: 15950492658