



K1751 mouse mAb

Catalog No	BYmab-08182
Isotype	IgG
Reactivity	Human; Mouse
Applications	WB
Gene Name	KIAA1751
Protein Name	K1751
Immunogen	Synthesized peptide derived from human K1751 AA range: 315-365
Specificity	This antibody detects endogenous levels of K1751 at Human/Mouse
Formulation	Liquid in PBS containing 50% glycerol, 0.5% BSA and 0.297% sodium azide.
Source	Monoclonal, Mouse,IgG
Purification	The antibody was affinity-purified from mouse antiserum by affinity-chromatography using epitope-specific immunogen.
Dilution	WB 1:500-2000
Concentration	1 mg/ml
Purity	≥90%
Storage Stability	-20°C/1 year
Synonyms	Uncharacterized protein KIAA1751
Observed Band	85kD
Cell Pathway	Cytoplasm, cytoskeleton, cilium axoneme .
Tissue Specificity	Brain,
Function	polymorphism:PubMed:11214970 sequence (BAB21842) differs from that shown due to a possible polymorphism in position 763 that produces a Gln residue instead of a stop codon (dbSNP:rs28548017) and leads to a protein of 768 residues whose C-terminal sequence is Ser-Gln-Ala-Phe-Asp-Val-Lys instead of Ser.,
Background	
matters needing attention	Avoid repeated freezing and thawing!

Nanjing BYabscience technology Co.,Ltd

网址: www.njbybio.com

官方热线: 025-5229-8998

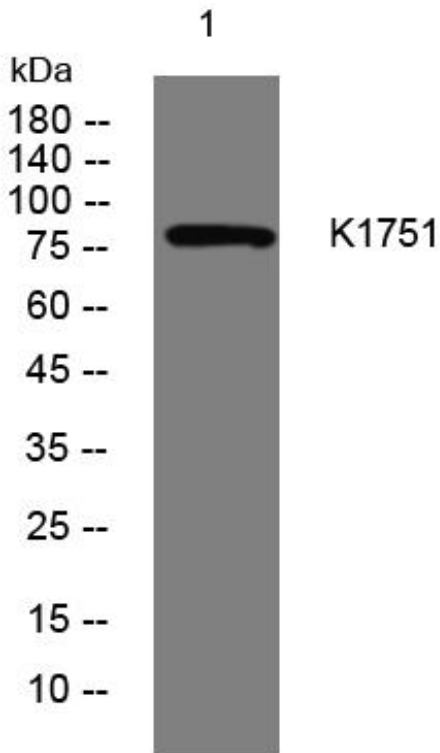
监督电话: 15950492658



Usage suggestions

This product can be used in immunological reaction related experiments. For more information, please consult technical personnel.

Products Images



Western Blot analysis of various cells using K1751 mouse mAb

Nanjing BYabs science technology Co.,Ltd

网址: www.njbybio.com

官方热线: 025-5229-8998

监督电话: 15950492658