



CEP85 mouse mAb

Catalog No	BYmab-08180
Isotype	IgG
Reactivity	Human; Mouse
Applications	WB
Gene Name	CEP85 CCDC21
Protein Name	CEP85
Immunogen	Synthesized peptide derived from human CEP85 AA range: 267-317
Specificity	This antibody detects endogenous levels of CEP85 at Human/Mouse
Formulation	Liquid in PBS containing 50% glycerol, 0.5% BSA and 0.295% sodium azide.
Source	Monoclonal, Mouse,IgG
Purification	The antibody was affinity-purified from mouse antiserum by affinity-chromatography using epitope-specific immunogen.
Dilution	WB 1:500-2000
Concentration	1 mg/ml
Purity	≥90%
Storage Stability	-20°C/1 year
Synonyms	Centrosomal protein of 85 kDa (Coiled-coil domain-containing protein 21)
Observed Band	85kD
Cell Pathway	Cytoplasm, cytoskeleton, microtubule organizing center, centrosome . Cytoplasm, cytoskeleton, spindle pole . Nucleus, nucleolus . Localizes to centrosomes and nucleolus in interphase. Upon entry into mitosis, relocates from nucleolus and accumulates at spindle poles (PubMed:21399614). Associated with the pericentriolar material. Localizes to centrosomes at a low level in G1 phase and a slightly increased level in S phase, with gradually elevated levels during G2 phase. The levels at centrosomes further increase at G2/M, reaching a peak at spindle poles at early mitotic stages and remain high until the end of anaphase (PubMed:26220856). .
Tissue Specificity	Hepatoma,Placenta,Retinoblastoma,Testis,
Function	similarity:Belongs to the CCDC21 family.,
Background	This gene encodes a protein that belongs to the centrosome-associated family of proteins. The centrosome is a subcellular organelle in the animal cell that

Nanjing BYabscience technology Co.,Ltd



functions as a microtubule organizing center and is involved in cell-cycle progression. Alternate splicing results in multiple transcript variants. [provided by RefSeq, Jul 2013],

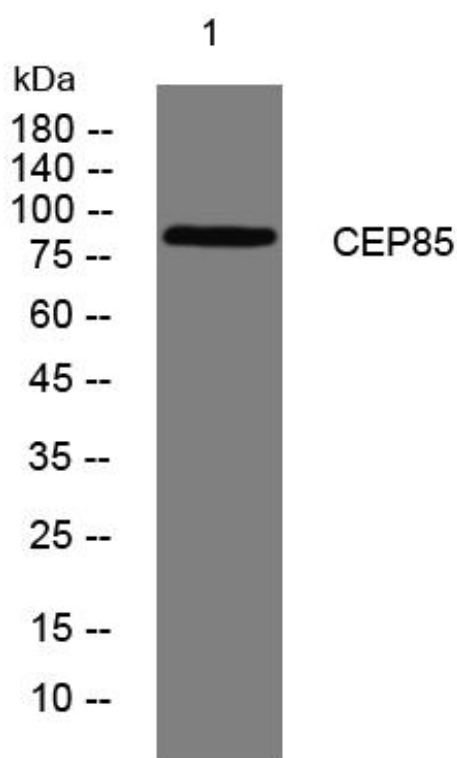
matters needing attention

Avoid repeated freezing and thawing!

Usage suggestions

This product can be used in immunological reaction related experiments. For more information, please consult technical personnel.

Products Images



Western Blot analysis of various cells using CEP85 mouse mAb