



S26A8 mouse mAb

Catalog No	BYmab-08169
Isotype	IgG
Reactivity	Human; Mouse
Applications	WB
Gene Name	SLC26A8 TAT1
Protein Name	S26A8
Immunogen	Synthesized peptide derived from human S26A8 AA range: 82-132
Specificity	This antibody detects endogenous levels of S26A8 at Human/Mouse
Formulation	Liquid in PBS containing 50% glycerol, 0.5% BSA and 0.284% sodium azide.
Source	Monoclonal, Mouse,IgG
Purification	The antibody was affinity-purified from mouse antiserum by affinity-chromatography using epitope-specific immunogen.
Dilution	WB 1:500-2000
Concentration	1 mg/ml
Purity	≥90%
Storage Stability	-20°C/1 year
Synonyms	Testis anion transporter 1 (Anion exchange transporter) (Solute carrier family 26 member 8)
Observed Band	105kD
Cell Pathway	Membrane ; Multi-pass membrane protein . Located at the annulus ring structure within the sperm cell. .
Tissue Specificity	Expression observed exclusively in testis, restricted to the meiotic phase of the germ cell. Abundant expression located in the seminiferous tubules, concentrated on the luminal side of the tubuli harboring the spermatocytes and spermatids. Expressed in spermatozoa.
Function	caution:Was originally (Ref.3, AAO26699) thought to originate from mouse.,function:Acts as a DIDS-sensitive anion exchanger mediating chloride, sulfate and oxalate transport. May fulfill critical anion exchange functions in male germ line during meiosis and hence may play a role in spermatogenesis. May be involved in a new regulatory pathway linking sulfate transport to RhoGTPase signaling in male germ cells. A critical component of the sperm annulus that is essential for correct sperm tail differentiation and motility and hence male fertility.,induction:Repressed by tunicamycin, an inhibitor of N-glycosylation.,miscellaneous:Activity is inhibited by

Nanjing BYabscience technology Co.,Ltd



4,4'-Di-isothiocyanatostilbene-2,2'-disulfonic acid (DIDS - an inhibitor of several anionic channels and transporters), gluconate, and by thiosulfate.,PTM:N-glycosylated.,similarity:Belongs to the SLC26A/SulP transporter (TC 2.A.53) family.,

Background

This gene encodes a member of the SLC26 gene family of anion transporters. Family members are well conserved in gene structure and protein length yet have markedly different tissue expression patterns. The expression of this gene appears to be restricted to spermatocytes. Alternatively spliced transcript variants that encode different isoforms have been described. [provided by RefSeq, Jul 2010],

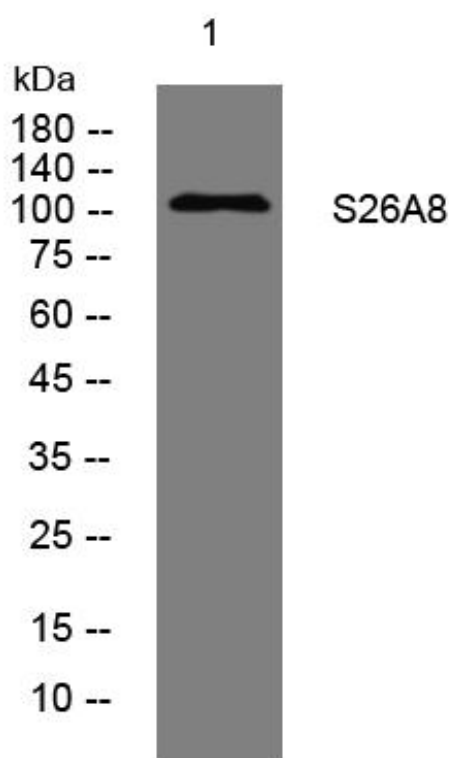
matters needing attention

Avoid repeated freezing and thawing!

Usage suggestions

This product can be used in immunological reaction related experiments. For more information, please consult technical personnel.

Products Images



Western Blot analysis of various cells using S26A8 mouse mAb