



PCSK6 mouse mAb

Catalog No	BYmab-08164
Isotype	IgG
Reactivity	Human;Rat
Applications	WB
Gene Name	PCSK6 PACE4
Protein Name	PCSK6
Immunogen	Synthesized peptide derived from human PCSK6 AA range: 734-784
Specificity	This antibody detects endogenous levels of PCSK6 at Human/Rat
Formulation	Liquid in PBS containing 50% glycerol, 0.5% BSA and 0.279% sodium azide.
Source	Monoclonal, Mouse,IgG
Purification	The antibody was affinity-purified from mouse antiserum by affinity-chromatography using epitope-specific immunogen.
Dilution	WB 1:500-2000
Concentration	1 mg/ml
Purity	≥90%
Storage Stability	-20°C/1 year
Synonyms	Proprotein convertase subtilisin/kexin type 6 (EC 3.4.21.-) (Paired basic amino acid cleaving enzyme 4) (Subtilisin-like proprotein convertase 4) (SPC4) (Subtilisin/kexin-like protease PACE4)
Observed Band	105kD
Cell Pathway	[Isoform PACE4A-I]: Secreted.; [Isoform PACE4A-II]: Secreted.; [Isoform PACE4C]: Endoplasmic reticulum. Not secreted, remains probably in zymogen form in endoplasmic reticulum.; [Isoform PACE4CS]: Endoplasmic reticulum. Not secreted, remains probably in zymogen form in endoplasmic reticulum.; [Isoform PACE4E-I]: Endomembrane system; Peripheral membrane protein. Retained intracellularly probably through a hydrophobic cluster in their C-terminus.; [Isoform PACE4E-II]: Endomembrane system; Peripheral membrane protein. Retained intracellularly probably through a hydrophobic cluster in their C-terminus.; [Isoform PACE4B]: Secreted.
Tissue Specificity	Each PACE4 isoform exhibits a unique restricted distribution. Isoform PACE4A-I is expressed in heart, brain, placenta, lung, skeletal muscle, kidney, pancreas, but at comparatively higher levels in the liver. Isoform PACE4A-II is at least expressed in placenta. Isoform PACE4B was only found in the embryonic kidney cell line from which it was isolated. Isoform PACE4C and isoform PACE4D are

Nanjing BYabscience technology Co.,Ltd



expressed in placenta. Isoform PACE4E-I is expressed in cerebellum, placenta and pituitary. Isoform PACE4E-II is at least present in cerebellum.

Function

catalytic activity:Release of mature proteins from their proproteins by cleavage of Arg-Xaa-Yaa-Arg-|-Zaa bonds, where Xaa can be any amino acid and Yaa is Arg or Lys.,cofactor:Calcium .,domain:The propeptide domain acts as an intramolecular chaperone assisting the folding of the zymogen within the endoplasmic reticulum. Isoform PACE4D lacks the propeptide domain.,function:Likely to represent an endoprotease activity within the constitutive secretory pathway, with unique restricted distribution in both neuroendocrine and non-neuroendocrine tissues and caMABLE of cleavage at the RX(K/R)R consensus motif.,similarity:Belongs to the peptidase S8 family.,similarity:Contains 1 homo B/P domain.,similarity:Contains 1 PLAC domain.,subcellular location:Not secreted, remains probably in zymogen form in endoplasmic reticulum.,subcellular location:Retained intracellularly probably through a hydrophob

Background

This gene encodes a member of the subtilisin-like proprotein convertase family, which includes proteases that process protein and peptide precursors trafficking through regulated or constitutive branches of the secretory pathway. The encoded protein undergoes an initial autocatalytic processing event in the ER to generate a heterodimer which exits the ER and sorts to the trans-Golgi network where a second autocatalytic event takes place and the catalytic activity is acquired. The encoded protease is constitutively secreted into the extracellular matrix and expressed in many tissues, including neuroendocrine, liver, gut, and brain. This gene encodes one of the seven basic amino acid-specific members which cleave their substrates at single or paired basic residues. Some of its substrates include transforming growth factor beta related proteins, proalbumin, and von Willebrand factor. This gene is thought to play a role in tumor progression and left-right patterning. Alternatively spliced transcript variants encoding different isoforms have been identified. [provided by RefSeq, Feb 2014],

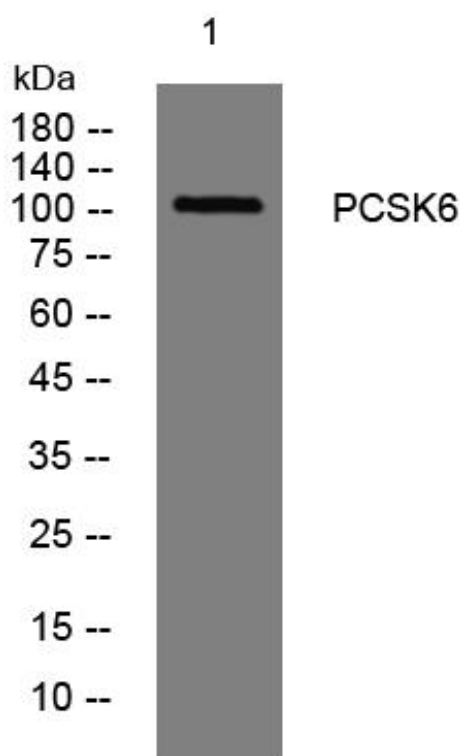
matters needing attention

Avoid repeated freezing and thawing!

Usage suggestions

This product can be used in immunological reaction related experiments. For more information, please consult technical personnel.

Products Images



Western Blot analysis of various cells using PCSK6 mouse mAb

nce technology Co.,Ltd

025-5229-8998

监督电话: 15950492658