



# SYAC mouse mAb

<b>Catalog No</b>	BYmab-08163
<b>Isotype</b>	IgG
<b>Reactivity</b>	Human; Mouse;Rat
<b>Applications</b>	WB
<b>Gene Name</b>	AARS
<b>Protein Name</b>	SYAC
<b>Immunogen</b>	Synthesized peptide derived from human SYAC AA range: 504-554
<b>Specificity</b>	This antibody detects endogenous levels of SYAC at Human/Mouse/Rat
<b>Formulation</b>	Liquid in PBS containing 50% glycerol, 0.5% BSA and 0.278% sodium azide.
<b>Source</b>	Monoclonal, Mouse,IgG
<b>Purification</b>	The antibody was affinity-purified from mouse antiserum by affinity-chromatography using epitope-specific immunogen.
<b>Dilution</b>	WB 1:500-2000
<b>Concentration</b>	1 mg/ml
<b>Purity</b>	≥90%
<b>Storage Stability</b>	-20°C/1 year
<b>Synonyms</b>	Alanine--tRNA ligase, cytoplasmic (EC 6.1.1.7) (Alanyl-tRNA synthetase) (AlaRS) (Renal carcinoma antigen NY-REN-42)
<b>Observed Band</b>	105kD
<b>Cell Pathway</b>	Cytoplasm .
<b>Tissue Specificity</b>	Epithelium,Liver,Osteosarcoma,Placenta,Renal cell carcinoma,
<b>Function</b>	catalytic activity:ATP + L-alanine + tRNA(Ala) = AMP + diphosphate + L-alanyl-tRNA(Ala).,similarity:Belongs to the class-II aminoacyl-tRNA synthetase family.,subunit:Monomer.,
<b>Background</b>	The human alanyl-tRNA synthetase (AARS) belongs to a family of tRNA synthases, of the class II enzymes. Class II tRNA synthases evolved early in evolution and are highly conserved. This is reflected by the fact that 498 of the 968-residue polypeptide human AARS shares 41% identity with the E.coli protein. tRNA synthases are the enzymes that interpret the RNA code and attach specific aminoacids to the tRNAs that contain the cognate trinucleotide anticodons. They consist of a catalytic domain which interacts with the amino acid acceptor-T psi C

**Nanjing BYabscience technology Co.,Ltd**



helix of the tRNA, and a second domain which interacts with the rest of the tRNA structure. [provided by RefSeq, Jul 2008],

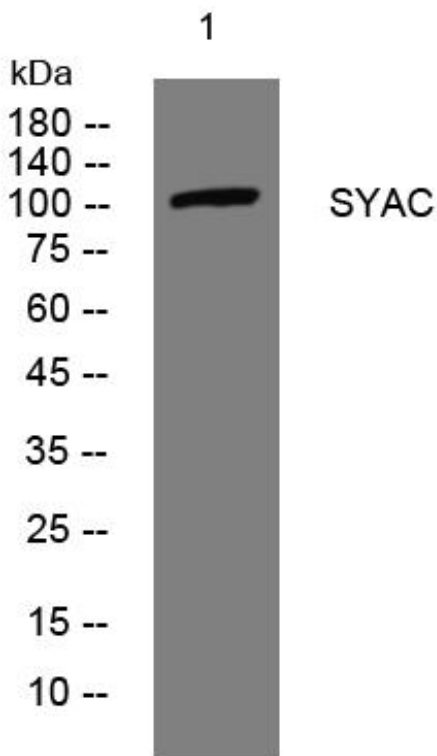
**matters needing attention**

Avoid repeated freezing and thawing!

**Usage suggestions**

This product can be used in immunological reaction related experiments. For more information, please consult technical personnel.

## Products Images



Western Blot analysis of various cells using SYAC mouse mAb