



# K0753 mouse mAb

Catalog No	BYmab-08159
Isotype	IgG
Reactivity	Human; Mouse
Applications	WB
Gene Name	KIAA0753
Protein Name	K0753
Immunogen	Synthesized peptide derived from human K0753 AA range: 778-828
Specificity	This antibody detects endogenous levels of K0753 at Human/Mouse
Formulation	Liquid in PBS containing 50% glycerol, 0.5% BSA and 0.274% sodium azide.
Source	Monoclonal, Mouse,IgG
Purification	The antibody was affinity-purified from mouse antiserum by affinity-chromatography using epitope-specific immunogen.
Dilution	WB 1:500-2000
Concentration	1 mg/ml
Purity	≥90%
Storage Stability	-20°C/1 year
Synonyms	Uncharacterized protein KIAA0753
Observed Band	105kD
Cell Pathway	Cytoplasm, cytoskeleton, microtubule organizing center, centrosome, centriole . Cytoplasm, cytoskeleton, microtubule organizing center, centrosome, centriolar satellite . Cytoplasm, cytoskeleton, microtubule organizing center, centrosome . Localization to centrioles and pericentriolar satellites may be mediated by interaction with PCM1. .
Tissue Specificity	Brain,Testis,Uterus,
Function	sequence caution:Translated as Glu.,
Background	
matters needing attention	Avoid repeated freezing and thawing!

Nanjing BYabscience technology Co.,Ltd

网址: [www.njbybio.com](http://www.njbybio.com)

官方热线: 025-5229-8998

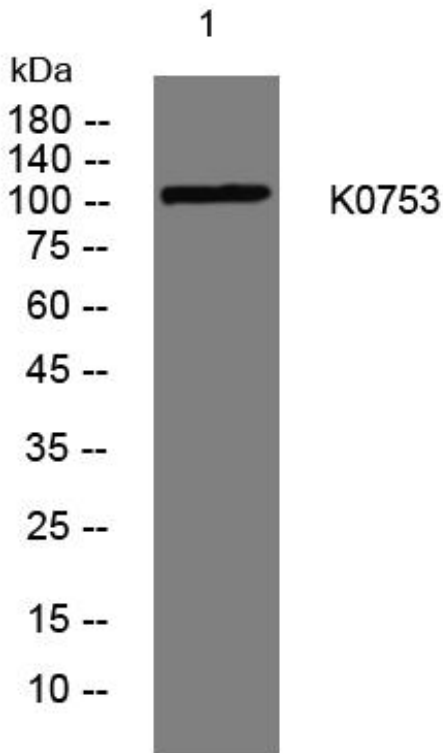
监督电话: 15950492658



### Usage suggestions

This product can be used in immunological reaction related experiments. For more information, please consult technical personnel.

## Products Images



Western Blot analysis of various cells using K0753 mouse mAb

Nanjing BYabscience technology Co.,Ltd

网址: [www.njbybio.com](http://www.njbybio.com)

官方热线: 025-5229-8998

监督电话: 15950492658