



SKOR1 mouse mAb

Catalog No	BYmab-08157
Isotype	IgG
Reactivity	Human; Mouse;Rat
Applications	WB
Gene Name	SKOR1 CORL1 FUSSEL15 LBXCOR1
Protein Name	SKOR1
Immunogen	Synthesized peptide derived from human SKOR1 AA range: 322-372
Specificity	This antibody detects endogenous levels of SKOR1 at Human/Mouse/Rat
Formulation	Liquid in PBS containing 50% glycerol, 0.5% BSA and 0.272% sodium azide.
Source	Monoclonal, Mouse,IgG
Purification	The antibody was affinity-purified from mouse antiserum by affinity-chromatography using epitope-specific immunogen.
Dilution	WB 1:500-2000
Concentration	1 mg/ml
Purity	≥90%
Storage Stability	-20°C/1 year
Synonyms	SKI family transcriptional corepressor 1 (Functional Smad-suppressing element on chromosome 15) (Fussel-15) (LBX1 corepressor 1) (Ladybird homeobox corepressor 1)
Observed Band	105kD
Cell Pathway	Nucleus .
Tissue Specificity	Present specifically in cerebellar Purkinje cells (at protein level).
Function	caution:The sequence shown here is derived from an Ensembl automatic analysis pipeline and should be considered as preliminary data.,function:Acts as a transcriptional corepressor of LBX1 (By similarity). Inhibits BMP signaling.,similarity:Belongs to the SKI family.,subunit:Interacts with LBX1 (By similarity). Interacts with SMAD1, SMAD2 and SMAD3.,tissue specificity:Present specifically in cerebellar Purkinje cells (at protein level).,
Background	

Nanjing BYabscience technology Co.,Ltd

网址: www.njbybio.com

官方热线: 025-5229-8998

监督电话: 15950492658



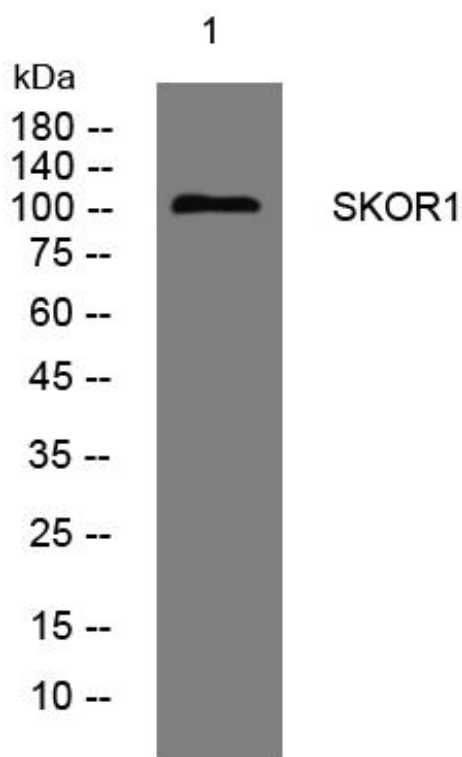
matters needing attention

Avoid repeated freezing and thawing!

Usage suggestions

This product can be used in immunological reaction related experiments. For more information, please consult technical personnel.

Products Images



Western Blot analysis of various cells using SKOR1 mouse mAb