



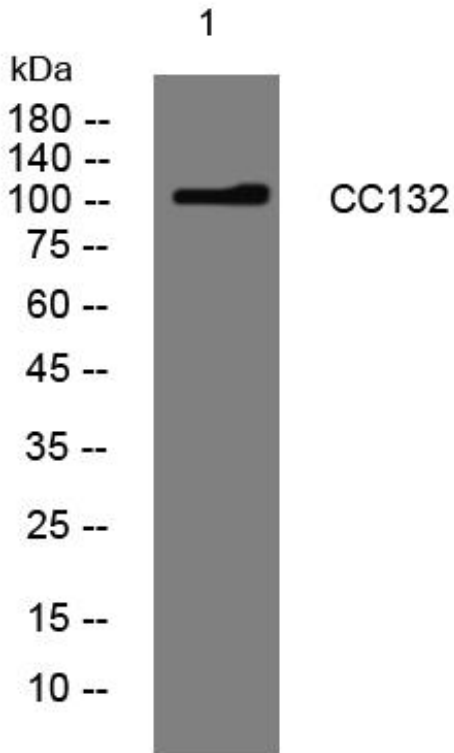
# CC132 mouse mAb

Catalog No	BYmab-08155
Isotype	IgG
Reactivity	Human; Mouse
Applications	WB
Gene Name	CCDC132 KIAA1861
Protein Name	CC132
Immunogen	Synthesized peptide derived from human CC132 AA range: 177-227
Specificity	This antibody detects endogenous levels of CC132 at Human/Mouse
Formulation	Liquid in PBS containing 50% glycerol, 0.5% BSA and 0.270% sodium azide.
Source	Monoclonal, Mouse,IgG
Purification	The antibody was affinity-purified from mouse antiserum by affinity-chromatography using epitope-specific immunogen.
Dilution	WB 1:500-2000
Concentration	1 mg/ml
Purity	≥90%
Storage Stability	-20°C/1 year
Synonyms	Coiled-coil domain-containing protein 132
Observed Band	105kD
Cell Pathway	Recycling endosome . Membrane . Associates with membranes in an EIPR1-dependent manner. .
Tissue Specificity	Ubiquitous, with higher expression in brain and skeletal muscle.
Function	
Background	
matters needing attention	Avoid repeated freezing and thawing!
Usage suggestions	This product can be used in immunological reaction related experiments. For more information, please consult technical personnel.

Nanjing BYabscience technology Co.,Ltd



## Products Images



Western Blot analysis of various cells using CC132 mouse mAb

Nanjing BYabs science technology Co.,Ltd

网址: [www.njbybio.com](http://www.njbybio.com)

官方热线: 025-5229-8998

监督电话: 15950492658