



KINH mouse mAb

Catalog No	BYmab-08151
Isotype	IgG
Reactivity	Human; Mouse;Rat
Applications	WB
Gene Name	KIF5B KNS KNS1
Protein Name	KINH
Immunogen	Synthesized peptide derived from human KINH AA range: 64-114
Specificity	This antibody detects endogenous levels of KINH at Human/Mouse/Rat
Formulation	Liquid in PBS containing 50% glycerol, 0.5% BSA and 0.266% sodium azide.
Source	Monoclonal, Mouse,IgG
Purification	The antibody was affinity-purified from mouse antiserum by affinity-chromatography using epitope-specific immunogen.
Dilution	WB 1:500-2000
Concentration	1 mg/ml
Purity	≥90%
Storage Stability	-20°C/1 year
Synonyms	Kinesin-1 heavy chain (Conventional kinesin heavy chain) (Ubiquitous kinesin heavy chain) (UKHC)
Observed Band	105kD
Cell Pathway	Cytoplasm, cytoskeleton . Cytolytic granule membrane . Lysosome membrane ; Peripheral membrane protein ; Cytoplasmic side . Uniformly distributed between soma and neurites in hippocampal neurons. .
Tissue Specificity	Muscle,Placenta,Uterus,
Function	domain:Composed of three structural domains: a large globular N-terminal domain which is responsible for the motor activity of kinesin (it hydrolyzes ATP and binds microtubule), a central alpha-helical coiled coil domain that mediates the heavy chain dimerization; and a small globular C-terminal domain which interacts with other proteins (such as the kinesin light chains), vesicles and membranous organelles.,function:Microtubule-dependent motor required for normal distribution of mitochondria and lysosomes.,similarity:Belongs to the kinesin-like protein family.,similarity:Belongs to the kinesin-like protein family. Kinesin subfamily.,similarity:Contains 1 kinesin-motor domain.,subcellular location:Uniformly distributed between soma and neurites in hippocampal

Nanjing BYabscience technology Co.,Ltd



neurons.,subunit:Oligomer composed of two heavy chains and two light chains.
Interacts with GRIP1 (By similarity). Interacts with

Background

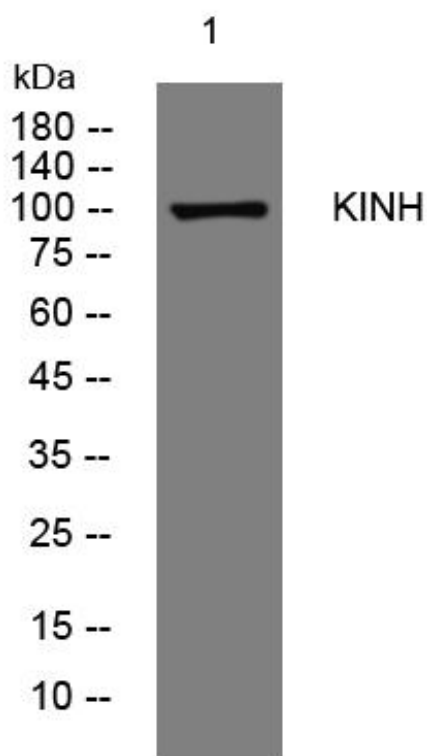
matters needing attention

Avoid repeated freezing and thawing!

Usage suggestions

This product can be used in immunological reaction related experiments. For more information, please consult technical personnel.

Products Images



Western Blot analysis of various cells using KINH mouse mAb

Nanjing BYabs science technology Co.,Ltd

网址: www.njbybio.com

官方热线: 025-5229-8998

监督电话: 15950492658