



# IREB2 mouse mAb

|                           |   |
|---------------------------|---|
| <b>Catalog No</b>         | BYmab-08150   |
| <b>Isotype</b>            | IgG   |
| <b>Reactivity</b>         | Human; Mouse;Rat  |
| <b>Applications</b>       | WB  |
| <b>Gene Name</b>          | IREB2   |
| <b>Protein Name</b>       | IREB2   |
| <b>Immunogen</b>          | Synthesized peptide derived from human IREB2 AA range: 702-752  |
| <b>Specificity</b>        | This antibody detects endogenous levels of IREB2 at Human/Mouse/Rat   |
| <b>Formulation</b>        | Liquid in PBS containing 50% glycerol, 0.5% BSA and 0.265% sodium azide.  |
| <b>Source</b>             | Monoclonal, Mouse,IgG   |
| <b>Purification</b>       | The antibody was affinity-purified from mouse antiserum by affinity-chromatography using epitope-specific immunogen.  |
| <b>Dilution</b>           | WB 1:500-2000   |
| <b>Concentration</b>      | 1 mg/ml   |
| <b>Purity</b>             | ≥90%  |
| <b>Storage Stability</b>  | -20°C/1 year  |
| <b>Synonyms</b>           | Iron-responsive element-binding protein 2 (IRE-BP 2) (Iron regulatory protein 2) (IRP2)   |
| <b>Observed Band</b>      | 105kD   |
| <b>Cell Pathway</b>       | Cytoplasm.  |
| <b>Tissue Specificity</b> | Brain,  |
| <b>Function</b>           | cofactor: Binds 1 4Fe-4S cluster per subunit.,function: Binds to iron-responsive elements (IRES), which are stem-loop structures found in the 5'-UTR of ferritin, and delta aminolevulinic acid synthase mRNAs, and in the 3'-UTR of transferrin receptor mRNA. Binding to the IRE element in ferritin results in the repression of its mRNA translation. Binding of the protein to the transferrin receptor mRNA inhibits the degradation of this otherwise rapidly degraded mRNA.,similarity: Belongs to the aconitase/IPM isomerase family., |
| <b>Background</b>         |   |

**Nanjing BYabscience technology Co.,Ltd**

网址: [www.njbybio.com](http://www.njbybio.com)

官方热线: 025-5229-8998

监督电话: 15950492658



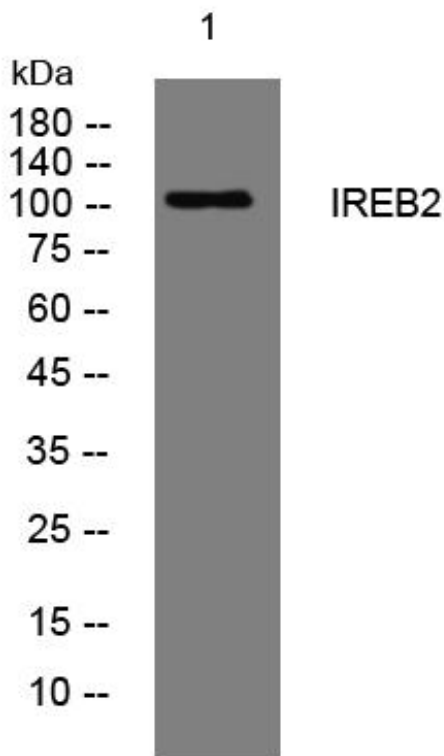
**matters needing attention**

Avoid repeated freezing and thawing!

**Usage suggestions**

This product can be used in immunological reaction related experiments. For more information, please consult technical personnel.

## Products Images



Western Blot analysis of various cells using IREB2 mouse mAb