



# IQEC1 mouse mAb

<b>Catalog No</b>	BYmab-08149
<b>Isotype</b>	IgG
<b>Reactivity</b>	Human; Mouse
<b>Applications</b>	WB
<b>Gene Name</b>	IQSEC1 ARFGEP100 BRAG2 KIAA0763
<b>Protein Name</b>	IQEC1
<b>Immunogen</b>	Synthesized peptide derived from human IQEC1 AA range: 693-743
<b>Specificity</b>	This antibody detects endogenous levels of IQEC1 at Human/Mouse
<b>Formulation</b>	Liquid in PBS containing 50% glycerol, 0.5% BSA and 0.264% sodium azide.
<b>Source</b>	Monoclonal, Mouse,IgG
<b>Purification</b>	The antibody was affinity-purified from mouse antiserum by affinity-chromatography using epitope-specific immunogen.
<b>Dilution</b>	WB 1:500-2000
<b>Concentration</b>	1 mg/ml
<b>Purity</b>	≥90%
<b>Storage Stability</b>	-20°C/1 year
<b>Synonyms</b>	IQ motif and SEC7 domain-containing protein 1 (ADP-ribosylation factors guanine nucleotide-exchange protein 100) (ADP-ribosylation factors guanine nucleotide-exchange protein 2) (Brefeldin-resistant Arf-GEF 2 protein)
<b>Observed Band</b>	105kD
<b>Cell Pathway</b>	Cytoplasm . Nucleus . Cell junction, synapse, postsynaptic density . Cytoplasmic vesicle, secretory vesicle, synaptic vesicle . At steady state, may be preferentially cytosolic.
<b>Tissue Specificity</b>	Expressed in brain, ovary, heart, lung, liver, kidney and leukocytes. Moderate expression was also detected in lung, skeletal muscle, placenta, small intestine, pancreas, spleen and testis.
<b>Function</b>	function:In addition to accelerate GTP gamma S binding by ARFs of all three classes, it appears to function preferentially as a guanine nucleotide exchange protein for ARF6, mediating internalisation of beta-1 integrin.,similarity:Belongs to the BRAG family.,similarity:Contains 1 IQ domain.,similarity:Contains 1 PH domain.,similarity:Contains 1 SEC7 domain.,subcellular location:At steady state, may be preferentially cytosolic.,subunit:Interacts with ARF6.,tissue specificity:Expressed in brain, ovary, heart, lung, liver, kidney and leukocytes.

**Nanjing BYabscience technology Co.,Ltd**



Moderate expression was also detected in lung, skeletal muscle, placenta, small intestine, pancreas, spleen and testis.,

## Background

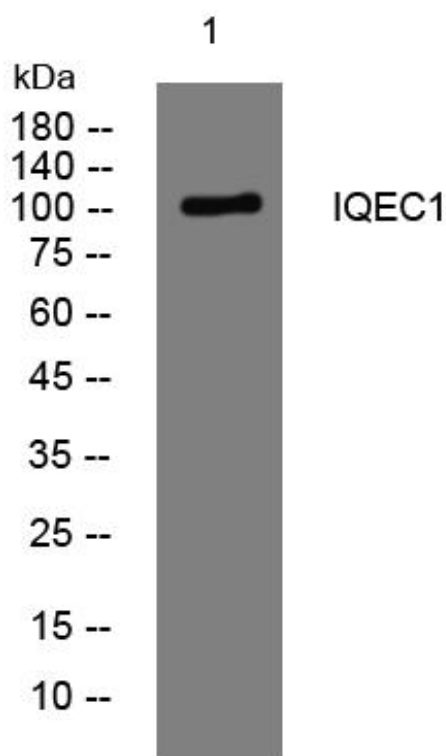
### matters needing attention

Avoid repeated freezing and thawing!

### Usage suggestions

This product can be used in immunological reaction related experiments. For more information, please consult technical personnel.

## Products Images



Nanjing BYabscience technology Co.,Ltd

网址: [www.njbybio.com](http://www.njbybio.com)

官方热线: 025-5229-8998

监督电话: 15950492658