



DSE mouse mAb

Catalog No	BYmab-08134
Isotype	IgG
Reactivity	Human; Mouse
Applications	WB
Gene Name	DSE SART2
Protein Name	DSE
Immunogen	Synthesized peptide derived from human DSE AA range: 164-214
Specificity	This antibody detects endogenous levels of DSE at Human/Mouse
Formulation	Liquid in PBS containing 50% glycerol, 0.5% BSA and 0.249% sodium azide.
Source	Monoclonal, Mouse,IgG
Purification	The antibody was affinity-purified from mouse antiserum by affinity-chromatography using epitope-specific immunogen.
Dilution	WB 1:500-2000
Concentration	1 mg/ml
Purity	≥90%
Storage Stability	-20°C/1 year
Synonyms	Dermatan-sulfate epimerase (DS epimerase) (EC 5.1.3.19) (Chondroitin-glucuronate 5-epimerase) (Squamous cell carcinoma antigen recognized by T-cells 2) (SART-2)
Observed Band	105kD
Cell Pathway	Endoplasmic reticulum membrane ; Multi-pass membrane protein . Golgi apparatus membrane ; Multi-pass membrane protein . Cytoplasmic vesicle membrane ; Multi-pass membrane protein . Microsome membrane ; Multi-pass membrane protein .
Tissue Specificity	Ubiquitously expressed with higher expression in kidney and ovary and lower expression in brain, colon and thymus. Also expressed in renal cell carcinomas, brain tumors, and in a part of melanomas and adenocarcinomas from organs other than the breast. Expressed in squamous cell carcinomas (SCC), glioma, and some adenocarcinoma cell lines, but not in breast cancer cell lines or any normal tissues (at protein level).
Function	catalytic activity:Chondroitin D-glucuronate = dermatan L-iduronate.,function:Converts D-glucuronic acid to L-iduronic acid (IdoUA) residues.,pathway:Glycan metabolism; chondroitin sulfate

Nanjing BYabscience technology Co.,Ltd



biosynthesis.,pathway:Glycan metabolism; heparan sulfate biosynthesis.,similarity:Belongs to the dermatan-sulfate isomerase family.,tissue specificity:Ubiquitously expressed with higher expression in kidney and ovary and lower expression in brain, colon and thymus. Also expressed in renal cell carcinomas, brain tumors, and in a part of melanomas and adenocarcinomas from organs other than the breast. Expressed in squamous cell carcinomas (SCC), glioma, and some adenocarcinoma cell lines, but not in breast cancer cell lines or any normal tissues (at protein level).,

Background

The protein encoded by this gene is a tumor-rejection antigen. It is localized to the endoplasmic reticulum and functions to convert D-glucuronic acid to L-iduronic acid during the biosynthesis of dermatan sulfate. This antigen possesses tumor epitopes capable of inducing HLA-A24-restricted and tumor-specific cytotoxic T lymphocytes in cancer patients and may be useful for specific immunotherapy. Mutations in this gene cause immusculocontractural Ehlers-Danlos syndrome. Alternative splicing results in multiple transcript variants. A related pseudogene has been identified on chromosome 9, and a paralogous gene exists on chromosome 18. [provided by RefSeq, Apr 2016],

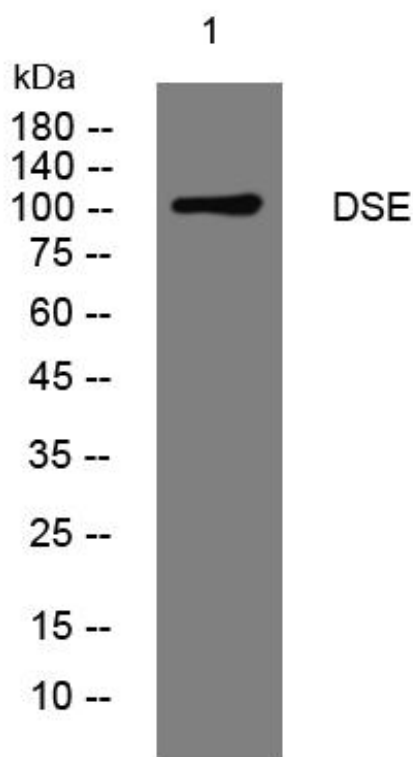
matters needing attention

Avoid repeated freezing and thawing!

Usage suggestions

This product can be used in immunological reaction related experiments. For more information, please consult technical personnel.

Products Images



Western Blot analysis of various cells using DSE mouse mAb

Nanjing BYabs science technology Co.,Ltd

网址: www.njbybio.com

官方热线: 025-5229-8998

监督电话: 15950492658