



COLA1 mouse mAb

Catalog No	BYmab-08129
Isotype	IgG
Reactivity	Human;Rat;Mouse;
Applications	WB
Gene Name	COL21A1 COL1AL FP633
Protein Name	COLA1
Immunogen	Synthesized peptide derived from human COLA1 AA range: 101-151
Specificity	This antibody detects endogenous levels of COLA1 at Human
Formulation	Liquid in PBS containing 50% glycerol, 0.5% BSA and 0.244% sodium azide.
Source	Monoclonal, Mouse,IgG
Purification	The antibody was affinity-purified from mouse antiserum by affinity-chromatography using epitope-specific immunogen.
Dilution	WB 1:500-2000
Concentration	1 mg/ml
Purity	≥90%
Storage Stability	-20°C/1 year
Synonyms	Collagen alpha-1(XXI) chain
Observed Band	105kD
Cell Pathway	Secreted, extracellular space, extracellular matrix . Cytoplasm . Found in the extracellular matrix component of blood vessel walls and in the cytoplasm of cultured human aortic smooth muscle.
Tissue Specificity	Highly expressed in lymph node, jejunum, pancreas, stomach, trachea, testis, uterus and placenta; moderately expressed in brain, colon, lung, prostate, spinal cord, salivary gland and vascular smooth-muscle cells and very weakly expressed in heart, liver, kidney, bone marrow, spleen, thymus, skeletal muscle, adrenal gland and peripheral leukocytes. Expression in heart was higher in the right ventricle and atrium than in the left ventricle and atrium.
Function	caution:The sequence shown here is derived from an Ensembl automatic analysis pipeline and should be considered as preliminary data.,developmental stage:Highest expression observed at the fetal stage. Expressed by smooth-muscle cells in the artery wall in a PDGF-dependent way.,induction:Stimulated by platelet-derived growth factor (PDGF).,similarity:Belongs to the fibril-associated collagens with interrupted

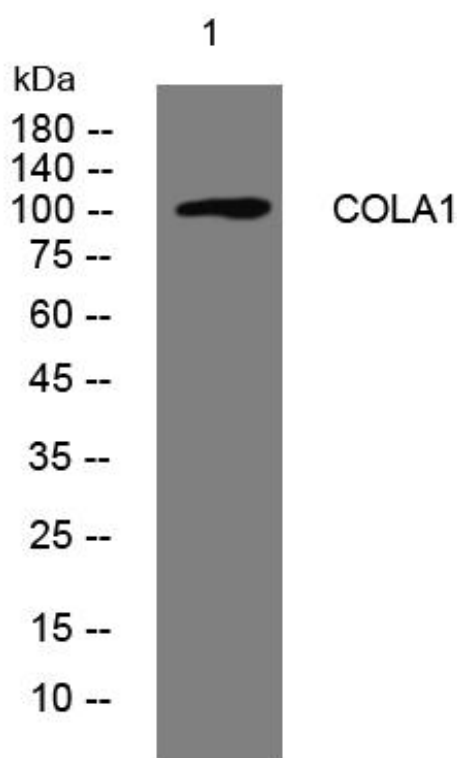
Nanjing BYabscience technology Co.,Ltd



helices (FACIT) family.,similarity:Contains 1 TSP N-terminal (TSPN) domain.,similarity:Contains 1 VWFA domain.,similarity:Contains 6 collagen-like domains.,subcellular location:Found in the extracellular matrix component of blood vessel walls and in the cytoplasm of cultured human aortic smooth muscle.,tissue specificity:Highly expressed in lymph node, jejunum, pancreas, stomach, trachea, testis, uterus and placenta; moderately expressed in brain, colon, lung, prostate, spinal cord,

Background	This gene encodes the alpha chain of type XXI collagen, a member of the FACIT (fibril-associated collagens with interrupted helices) collagen family. Type XXI collagen is localized to tissues containing type I collagen and maintains the integrity of the extracellular matrix. Alternative splicing results in multiple transcript variants. [provided by RefSeq, Jan 2016],
matters needing attention	Avoid repeated freezing and thawing!
Usage suggestions	This product can be used in immunological reaction related experiments. For more information, please consult technical personnel.

Products Images



Western Blot analysis of various cells using COLA1 mouse mAb